



www.urma.ch

A collection of several cylindrical metal components, likely parts of a boring system, arranged on a light-colored surface. The components are made of polished metal and feature various internal and external features, including threads, grooves, and small holes. One component in the foreground is particularly detailed, showing a complex internal structure with a central hole and several smaller holes around it. The background is a soft, out-of-focus white.

**Innovation Is
Our Tool**

SWISS  QUALITY

URMA Boring System
Vibration Absorbing System



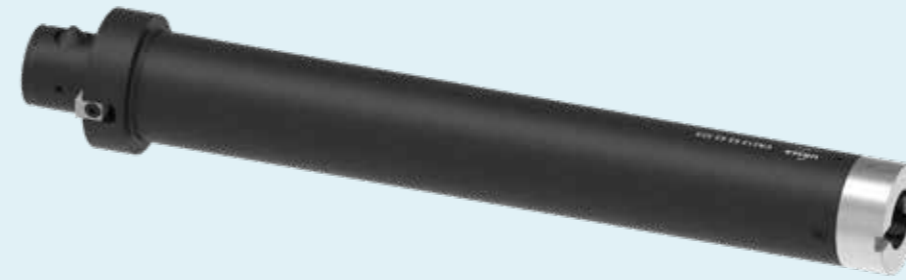
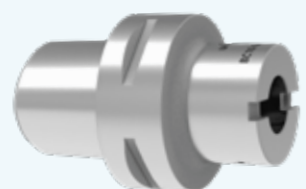
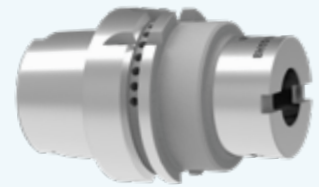
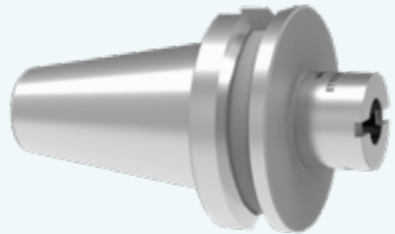
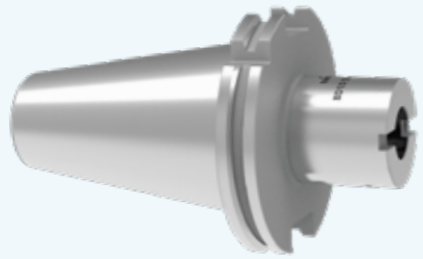
«One 4 all» – Hohe Flexibilität dank modularer Trennstelle. Hohe Schnittdaten bei grossen Auskraglängen bis 10xD. Vielseitig einsetzbar für Bohrungs- und Fräsanwendungen. Massive Kostensenkung.

«One 4 all» – High flexibility thanks to a modular interface. High cutting data with large tool projection lengths up to 10xD. Multifunctional use for boring and milling applications. Significant cost reduction.

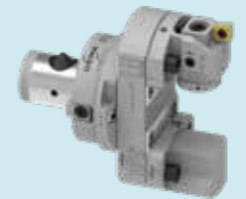
Vibration Absorbing System

Page 6

Page 8 - 9



Page 7



BRAND-NEW

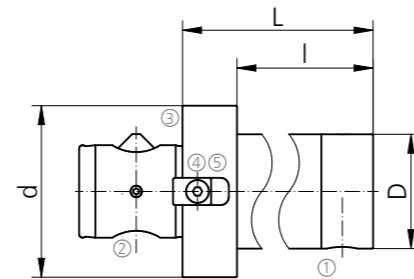
Vibration-Absorbing System



VAS-Reduktionen

VAS-Reducers

Beta	Beta 1	Order Number	LxD	L	I	D	d	kg	MCM	MCC	Index
63	40	VAS12 63 40 232	6xD	232	212	42	63	3.18	B63	B40	●
63	40	VAS12 63 40 316	8xD	316	296	42	63	4.08	B63	B40	●
63	40	VAS12 63 40 400	10xD	400	380	42	63	4.99	B63	B40	●
63	50	VAS12 63 50 185	4xD	185	150	50	63	4.54	B63	B50	●
63	50	VAS12 63 50 275	6xD	275	250	50	63	5.90	B63	B50	●
63	50	VAS12 63 50 375	8xD	375	350	50	63	8.16	B63	B50	●
63	50	VAS12 63 50 475	10xD	475	450	50	63	9.75	B63	B50	●
80	63	VAS12 80 63 474	8xD	474	449	63	80	14.51	B80	B63	●
80	63	VAS12 80 63 600	10xD	600	575	63	80	17.92	B80	B63	●



SPARE PARTS

Beta	①	②	③	④	⑤
40	Z00 40 24				
50	Z00 50 24				
63	Z00 63 24	Z00 63 21	Z00 63 23	Z00 63 25	C00 22 05
80		Z00 80 21	Z00 80 23	Z00 80 25	C00 22 07

BRAND-NEW

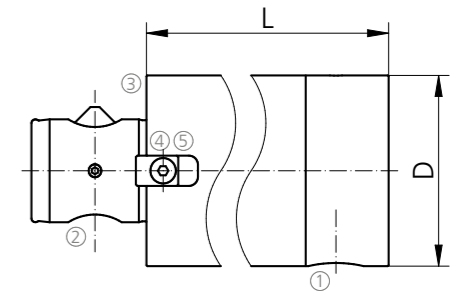
Vibration-Absorbing System



VAS-Verlängerungen

VAS-Extensions

Beta	Beta 1	Order Number	LxD	L	D	kg	MCM	MCC	Index
63	63	VAS13 63 63 197	4xD	197	63	5.67	B63	B63	●
63	63	VAS13 63 63 323	6xD	323	63	9.07	B63	B63	●



SPARE PARTS

Beta	①	②	③	④	⑤
63	Z00 63 24	Z00 63 21	Z00 63 23	Z00 63 25	C00 22 05

URMA Boring System für VAS
URMA Boring System for VAS

Bearbeitungsbedingungen
Application Conditions

- Optimale Voraussetzungen**
- HSK100
- Steilkegel 50 mit / ohne FT
- Sehr gute Stabilität der Maschine

- Optimal Conditions**
- HSK100
- Taper 50 with / without FT
- Very good machine stability

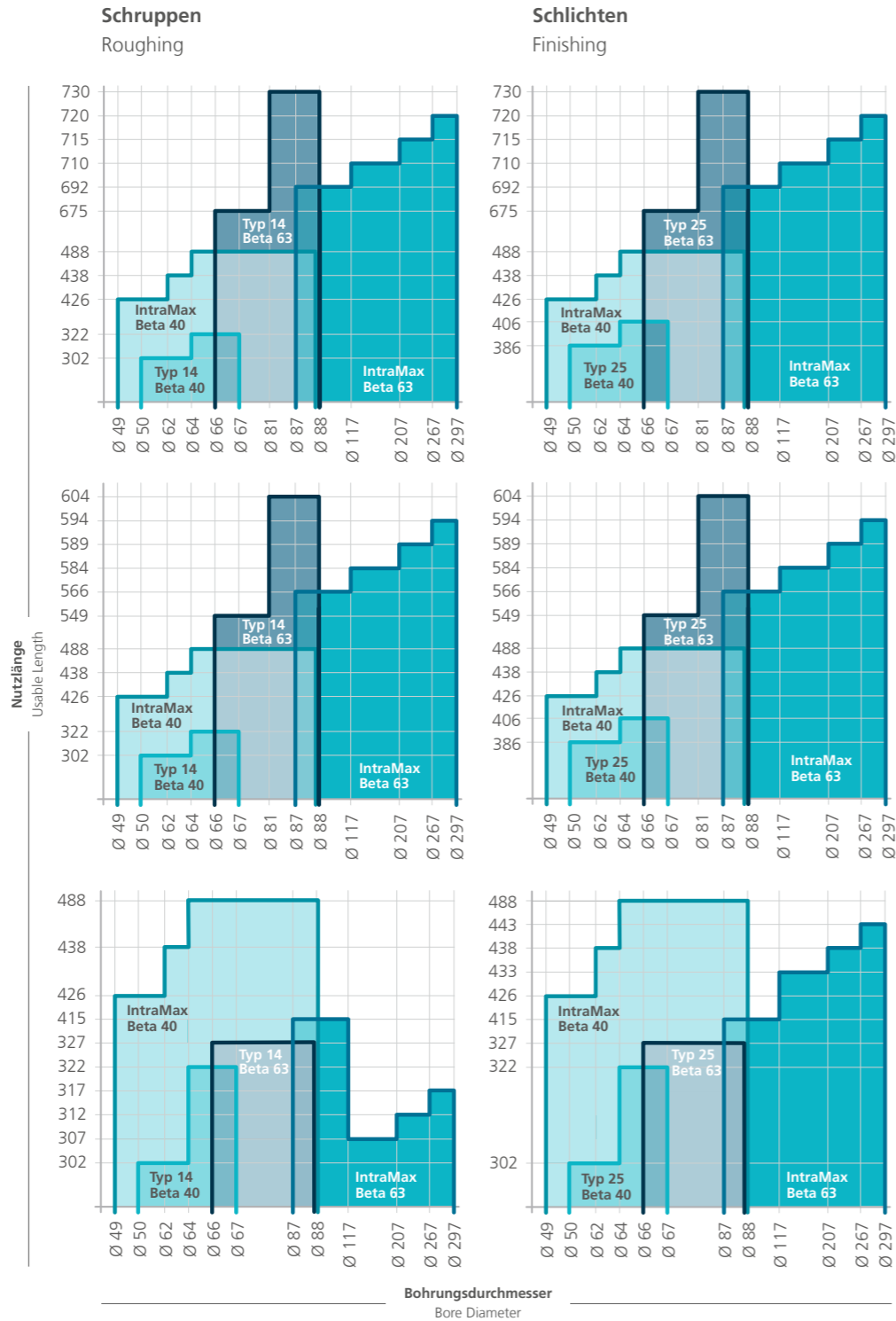
- Gute Voraussetzungen**
- HSK100 / HSK80
- Steilkegel 50 mit / ohne FT
- Gute Stabilität der Maschine

- Good Conditions**
- HSK100 / HSK80
- Taper 50 with / without FT
- Good machine stability

- Akzeptable Voraussetzungen**
- HSK63
- Steilkegel 40 mit / ohne FT
- Gute Stabilität der Maschine

- Acceptable Conditions**
- HSK63
- Taper 40 with / without FT
- Good machine stability

Typ 14 = VersaMax Typ 14
Typ 25 = VersaMax Typ 25



Bohrungsdurchmesser
Bore Diameter



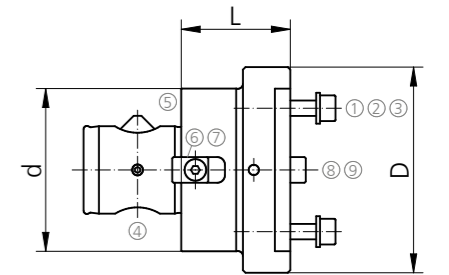
Ø 49 - 297 mm

Zwischenkonsolen
Intermediate Adaptors



Modulare Zwischenkonsolen
Intermediate Adaptors

Beta	Order Number	Ø-Range	L	D	d	kg	MCM	MCC	Index
40	B21 40 46 018	49 - 88	18	46	42	0.3	B40	Z2203	●
63	B21 63 80 022	87 - 297	22	80	63	1.0	B63	Z2201	●



Weitere Informationen finden Sie im URMA Boring System Katalog
Further information in the URMA Boring System Catalog

SPARE PARTS

Ø-Range	1	2	3	4	5	6	7	8	9
49 - 88	C00 22 05	K00 02 01	G00 02 04	Z00 40 21	Z00 40 23	Z00 40 25	C00 22 58		C00 12 08
87 - 297	C00 22 02	K00 02 20	G00 02 06	Z00 63 21	Z00 63 23	Z00 63 25	C00 22 05	Z00 21 20	



METRIC

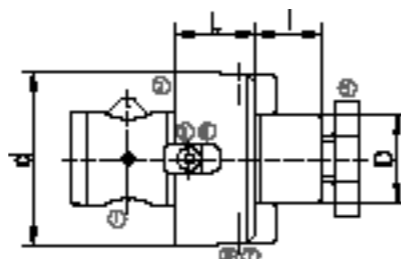
Aufsteckfräsdorne

Shell Mill Adaptors

Aufsteckfräsdorne metrisch

Shell Mill Adaptors Metric

Beta	Order Number	L	I	D	d	kg	MCM	Index
40	B44 40 13 013	13	12	13	42	0.2	B40	•
40	B44 40 16 013	13	17	16	42	0.2	B40	•
40	B44 40 22 015	15	19	22	42	0.3	B40	•
50	B44 50 16 016	16	17	16	50	0.4	B50	•
50	B44 50 22 016	16	19	22	50	0.5	B50	•
50	B44 50 27 016	16	21	27	50	0.5	B50	•
63	B44 63 22 021	21	19	22	63	0.8	B63	•
63	B44 63 27 021	21	21	27	63	0.9	B63	•
63	B44 63 32 021	21	24	32	63	1.0	B63	•



Weldon-Aufnahmen DIN 1835 B

Weldon Adaptors DIN 1835 B

Weldon-Aufnahmen auf Anfrage

Weldon adaptors on request



SPARE PARTS

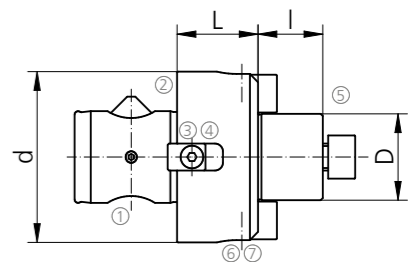
Beta	D	①	②	③	④	⑤	⑥	⑦
40		Z00 40 21	Z00 40 23	Z00 40 25	C00 22 58			
50		Z00 50 21	Z00 50 23	Z00 50 25	C00 22 60			
63		Z00 63 21	Z00 63 23	Z00 63 25	C00 22 05			
	13					52 01 13	Z00 B44 16 01	C00 22 30
	16					52 01 16	Z00 B44 16 01	C00 22 30
	22					52 01 22	Z00 B44 22 01	C00 22 31
	27					52 01 27	Z00 B44 27 01	C00 22 05
	32					52 01 32	Z00 B44 32 01	C00 22 71
	40					52 01 40	Z00 B44 40 01	C00 22 71

INCH

Aufsteckfräsdorne inch

Shell Mill Adaptors Inch

Beta	Order Number	L	I	D	d	lb	MCM	Index
40	B45 40 19 015	0.591"	0.641"	3/4"	1.654"	0.440	B40	•
40	B45 40 26 015	0.591"	0.725"	1"	1.654"	0.661	B40	•
50	B45 50 19 016	0.690"	0.641"	3/4"	1.969"	0.881	B50	•
50	B45 50 26 016	0.690"	0.725"	1"	2.250"	1.322	B50	•
63	B45 63 19 021	0.827"	0.680"	3/4"	2.480"	1.763	B63	•
63	B45 63 26 021	0.827"	0.725"	1"	2.480"	1.763	B63	•
63	B45 63 38 021	0.827"	0.940"	1 1/2"	3.750"	3.527	B63	•



SPARE PARTS

Beta	D	①	②	③	④	⑤	⑥	⑦
40		Z00 40 21	Z00 40 23	Z00 40 25	C00 22 58			
50		Z00 50 21	Z00 50 23	Z00 50 25	C00 22 60			
63		Z00 63 21	Z00 63 23	Z00 63 25	C00 22 05			
	3/4"					C00 23 70	Z00 B45 19 01	C00 23 73
	1"					C00 23 71	Z00 B45 26 01	C00 23 74
	1 1/2"					C00 23 72	Z00 B45 38 01	C00 23 75

URMA Tools

Drilling, Boring & Reaming





URMA AG WERKZEUGFABRIK

Obermatt 3
CH-5102 Ruppertswil
Switzerland
T +41 62 889 20 20
F +41 62 889 20 28
info@urma.ch
www.urma.ch

Subsidiaries

URMA GmbH
Eisenbahnstraße 37
D-77815 Bühl
+49 7223 911 170
info@urma-gmbh.de

URMA Trading (Shanghai) Co. Ltd.
Room 511, Hua Nan Mansion
1988 Dongfang Road
Pudong New District
CN-200125 Shanghai
+86 (21) 6109 6216
info@urmachina.com

Iraupen URMA
Poligono Belartza
ES-20018 Donostia-San Sebastian
Spain
+34 943 667 036
info@iraupen.es

License Manufacturer

Command Tooling Systems, LLC
13931 Sunfish Lake Blvd.
Ramsey MN, 55303 USA
+1 800 328 2197
support@commandtool.com

Paul Horn GmbH
Unter dem Holz 33-35
D-72072 Tübingen
+49 (0) 7071 7004 0
info@phorn.de

Sumitomo Electric Ind., Ltd.
1-1-1, Koyakita,
Itami-shi, Hyogo 664-0016
Japan
+81 72 772 4535
info@sumitomotool.com

SWISS  QUALITY



Download on the
 **App Store**



ANDROID APP ON
 **Google play**

