



www.urma.ch



**Innovation Is
Our Tool**

SWISS  QUALITY

URMA Reaming

Ø 7.600 – 13.100 mm

Ø 11.900 – 140.600 mm

Ø 5.800 – 33.000 mm

Sisällysluettelo

Table of Contents

RX small



9

Tuotteet	Product Overview	10
Teräpalat	Inserts	12
Teräpitimet	Insert Holder	13
Teräpalakoodit ja tilausesimerkit	Insert Size / Order Example	14
Kompensaatio ja uivapidin	Compensation Holder / Floating Chuck	16
Lisävarusteita	Accessories	22

RX medium



27

Tuotteet	Product Overview	28
Teräpala	Inserts	30
Teräpalakoodit ja tilausesimerkit	Insert Size / Order Example	32
Teräpitimet Ø 11,900 – 35,600 mm	Insert Holder Ø 11,900 – 35,600 mm	35
Kompensaatio ja uivapidin	Compensation Holder / Floating Chuck	38
Teräpitimet Ø 35,601 – 140,600 mm	Insert Holder Ø 35,601 – 140,600 mm	46
Adapterit ja terävarret	Adaptors and Shanks	48
Adapterit	Module Holders	57
Lisävarusteita	Accessories	59

RM vario



67

Tuotteet	Product Overview	68
Monoblock kalvimet	Monoblock Reamers	70
Tilausesimerkkejä	Order Example	81
Kompensaatio ja uivapidin	Compensation Holder / Floating Chuck	82
Lisävarusteita	Accessories	88

Ø 7.600 – 140.600 mm

Etuja käytettäessä RX small ja RX medium kalvaimia

Advantages of Using RX small and RX medium



Vaihdeettava teräpala

Modulaarinen kalvain kokoluokasta 7,600mm aina 140,600mm saakka.

Helppokäyttöinen

Helppo ja nopea teräpala vaihto

Tarkka paikoitus

Erittäin tarkka teräpala uudelleen paikoittuminen

Laaja standardikokojen tuotanto

Erikoiskoot ilman lisähintaa

Laaja käytettävyys

Työstömateriaalit, erikoiset teräpalat ja varret mahdollistavat laajan käytettävyyden

Kustannustehokkuus per tuote

Alhainen työkalukustannus tuotannon tehostamisen kautta

Replaceable Insert Reaming System

Modular reaming system with diameter from 7,600 mm to 140,600 mm

Simple Handling

Fast and simple insert change

Highest Precision in Positioning Accuracy

Highest repeatability on each insert change

Largest Standard Product Line

Customer-specific diameter without any surcharge

High Flexibility

Cutting materials, insert and shank system provide a high level of flexibility

Low Costs per Part

Significant cost reduction thanks to increased productivity and minimum machine down-times

RX small: page 9

RX medium: page 27

Ø 5.80 – 33.10 mm

Etuja käytettäessä RM vario kalvaimia

Advantages of Using RM vario



Monoblock kalvaimet

Kiinteä tai säädettävä monoblock kalvain valikoima kokoalueelle 5,800 mm - 33,100 mm

Materiaali ja pinnoitteet

Laadukkaat perusmateriaalit ja pinnoitteet takaavat luotettavan lopputuloksen

Muunneltavuus

Säädettävän kalvaimen etuna on hienosäätömahdollisuus kalvimen kuluessa tai materiaalinominaisuuksien vaihdellessa

Monimuotoisuus

Kalvaimet on saatavilla lyhyinä- ja pitkinämalleina sekä läpijähdytyksellä

Edukkuus

Uudelleen teroitusmahdollisuus pienentää työkalukuluja

Monoblock Reamers

Fixed and adjustable monoblock reaming tool in a diameter range from 5,800 mm to 33,100 mm

Cutting Materials and Coatings

Reliable cutting materials and coatings guarantee stable results

High Flexibility

Thanks to adjustable reamers, the diameter can be adapted to the material properties or tolerances

Offer Variety

The reamers are available in long and short versions as with or without internal coolant supply

Economic Viability

Tool costs can be reduced by regrinding and/or retipping

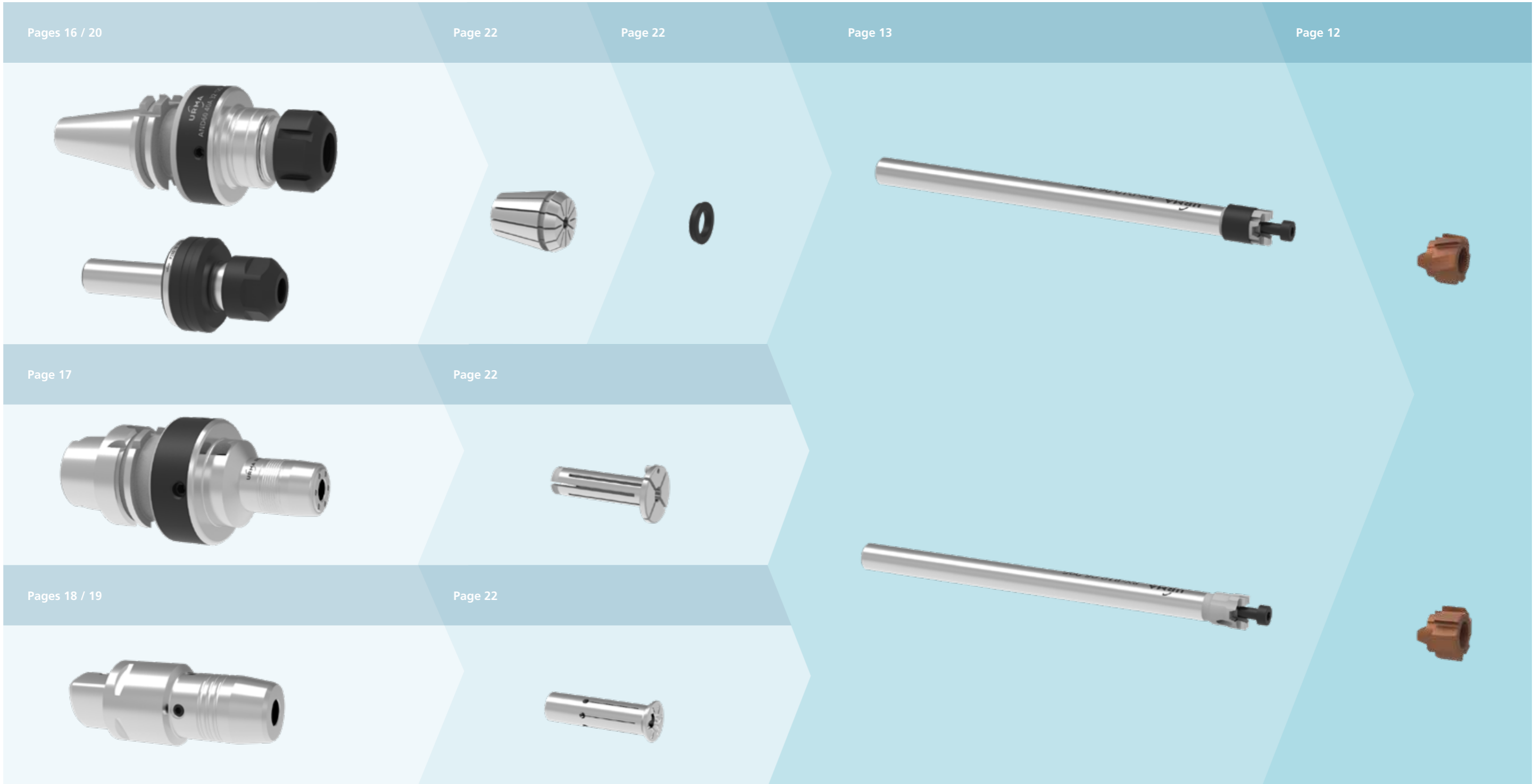
RM vario: page 67

URMA Reaming
RX small

Ø 7.600 – 13.100 mm

Ø 7.600 – 13.100 mm

URMA Reaming RX small



Ø 7.600 – 13.100 mm



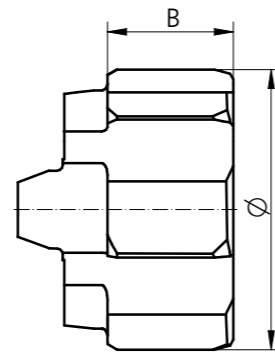
Teräpalat

Inserts

Suorahampainen (RXsG)

Straight Fluted Inserts

System Size	Ø-Range	B	z	MB	VE	Order Number	Stock
RXs 08	7.600 - 8.100	4.5	4	3	5	RXsG...	▲
RXs 10	8.101 - 9.600	4.5	6	3	5	Order example page 15	▲
RXs 11	9.601 - 11.100	4.5	6	3	5		▲
RXs 13	11.101 - 13.100	4.5	6	3	5		▲



Nousullinen teräpala (työntävä RXsL)

Left Helical Fluted Inserts

System Size	Ø-Range	B	z	MB	VE	Order Number	Stock
RXs 08	7.600 - 8.100	4.5	4	3	5	RXsL...	▲
RXs 10	8.101 - 9.600	4.5	6	3	5	Order example page 15	▲
RXs 11	9.601 - 11.100	4.5	6	3	5		▲
RXs 13	11.101 - 13.100	4.5	6	3	5		▲

z Hammasluku
MB Minimi tilausmäärä
VE Pakkauskoko

z Number of teeth
MB Minimum order quantity
VE Packaging quantity

● Varastossa On stock
▲ Lyhyellä toimitusajalla Short-term availability
○ Saatavilla tilauksesta Availability on request

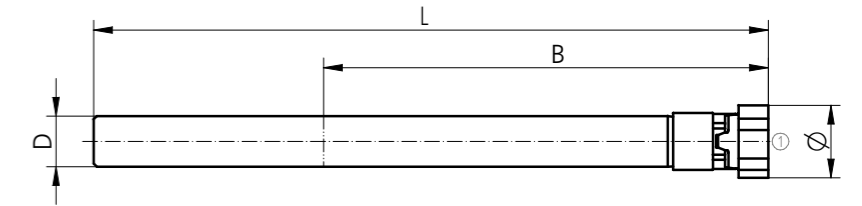
Kaikki mitat metrisinä
All dimensions in mm

Ø 7.600 – 13.100 mm



Teräpitimet

Insert Holders



Lyhytmalli (Teräs)

Short Version (Steel)



System Size	Ø-Range	L	B	D _{h6}	Order Number "D"	Order Number "B"	Stock
RXs 08	7.600 - 8.100	86	50	6	RXsD08 06 086	RXsB08 06 086	●
RXs 10	8.101 - 9.600	96	60	6	RXsD10 06 096	RXsB10 06 096	●
RXs 11	9.601 - 11.100	106	70	8	RXsD11 08 106	RXsB11 08 106	●
RXs 13	11.101 - 13.100	120	84	8	RXsD13 08 120	RXsB13 08 120	●

Pitkämalli (kovametalli)

Long Version (Carbide)



System Size	Ø-Range	L	B	D _{h6}	Order Number "D"	Order Number "B"	Stock
RXs 08	7.600 - 8.100	102	66	6	RXsD08 06 102HM	RXsB08 06 102HM	●
RXs 10	8.101 - 9.600	116	80	6	RXsD10 06 116HM	RXsB10 06 116HM	●
RXs 11	9.601 - 11.100	126	90	8	RXsD11 08 126HM	RXsB11 08 126HM	●
RXs 13	11.101 - 13.100	150	114	8	RXsD13 08 150HM	RXsB13 08 150HM	●

RXsD = Läpireikä
RXsB = Pohjareikä

RXsD = Through bore
RXsB = Blind bore

Kaikki terävarret ovat lyhennettävissä haluttuun mittaan (Lisäkulu)
All insert holders can be shortened to the optimal length on request (for surcharge)

Toimitus sisältää varaosaruuvien ja TORX avaimen

Scope of delivery: Including 1 spare screw and Torx®-Torque wrench

Varaosat

Spare Parts "D"

System Size	①
RXs 08	C00 90 51
RXs 10	C00 90 52
RXs 11	C00 90 53
RXs 13	C00 90 54

Varaosat

Spare Parts "B"

System Size	①
RXs 08	C00 90 51
RXs 10	C00 90 52
RXs 11	C00 90 53B
RXs 13	C00 90 54B

● Varastossa On stock
▲ Lyhyellä toimitusajalla Short-term availability
○ Saatavilla tilauksesta Availability on request

Kaikki mitat metrisinä
All dimensions in mm

Tietoa teräpalan mitoituksesta

Explanation of Insert Size

Huomioitavaa tilauksien yhteydessä reijän toleranssista. Halkaisija määritetään URMA standardin mukaisesti. Riippuen reiän toleranssialueesta, lopullinen halkaisija on 65% - 80% tietämällä kokonaistoleranssista.

Esimerkki vakioteräpalasta

RXsG8H7-A01U2 F0512R1
Teräpala hiotaan mittaan **Ø 8,011 mm**

RXsG8+20-10-A01U1 F0514R1
Teräpala hiotaan mittaan **Ø 8,015 mm**

Q merkitty teräpala kertoo, että kyseessä on erityinen toleranssi johon on tarpeen tehdä tarkemmalla hionnalla oleva teräpala.

Esimerkki Q teräpalasta

RXsG8.020Q+3-3-A01U2 F0512R1
Teräpala hiotaan mittaan **Ø 8,020 mm**

For orders with specifications of bore tolerance, the diameter is defined by URMA standard. Depending on tolerance range, the final diameter will be within 65% to 80% of the total tolerance.

Examples for Standard Insert Designation

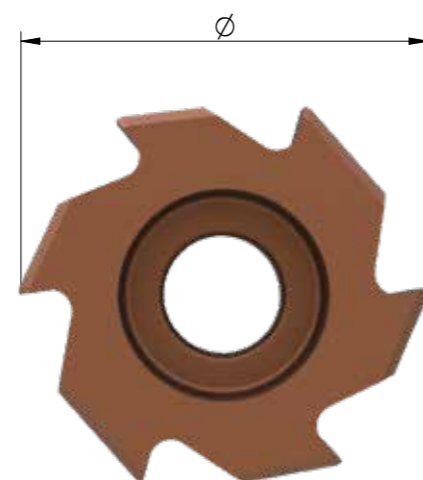
RXsG8H7-A01U2 F0512R1
insert size on **Ø 8,011 mm**

RXsG8+20-10-A01U1 F0514R1
insert size on **Ø 8,015 mm**

A Q-insert designation is to be selected for any specific insert dimension. Opposed to standard inserts where all tolerances refer to the bore tolerance, Q-inserts indicate the required insert diameter (target size). Q-inserts are recommended for special applications where standard tolerance ranges are not applicable.

Example for Q-Insert Designation

RXsG8.020Q+3-3-A01U2 F0512R1
insert size on **Ø 8,020 mm**



Tilausesimerkkejä

Order Example

	Reiän halkaisija Bore diameter	ISO Toleranssi ISO bore tolerances	Reiän toleranssi µm Bore tolerance in µm	Teräpalan halkaisija Insert diameter	Haluttu halkaisija (Q teräpala) Target size (Q-Insert)
Example	Tilausesimerkkejä Order example RXsG8H7-A01U2 F0512R1	Tilausesimerkkejä Order example RXsG8+20-10-A01U1 F0514R1	Tilausesimerkkejä Order example RXsG8.020Q+3-3-A01U2 F0512R1	Example	Example
	RXs RX small tuotemerkintä RX small system designation	RXs RX small tuotemerkintä RX small system designation	RXs RX small tuotemerkintä RX small system designation	RXs RX small tuotemerkintä RX small system designation	RXs RX small tuotemerkintä RX small system designation
	G Hammasmuoto (G = Suora; L = Nousullinen) Flute form (G = straight; L = left-hand helix)	G Hammasmuoto (G = Suora; L = Nousullinen) Flute form (G = straight; L = left-hand helix)	G Hammasmuoto (G = Suora; L = Nousullinen) Flute form (G = straight; L = left-hand helix)	G Hammasmuoto (G = Suora; L = Nousullinen) Flute form (G = straight; L = left-hand helix)	G Hammasmuoto (G = Suora; L = Nousullinen) Flute form (G = straight; L = left-hand helix)
Diameter	8 Halkaisija (mm) Diameter (mm)	8 Halkaisija (mm) Diameter (mm)	8 Halkaisija (mm) Diameter (mm)	8.020 Teräpalan Halkaisija (mm) Insert diameter (mm)	8.020 Teräpalan Halkaisija (mm) Insert diameter (mm)
	H7 Toleranssi ISO vakio Tolerance in ISO standard	+20-10 Reiän µm Bore tolerance (µm)	+20-10 Reiän µm Bore tolerance (µm)	Q Tarkkuushiotun teräpalan koodi Code for target size insert	Q Tarkkuushiotun teräpalan koodi Code for target size insert
	A01 Leikkuugeometria Cutting geometry	A01 Leikkuugeometria Cutting geometry	A01 Leikkuugeometria Cutting geometry	+3-3 Valmistustoleranssi µm Manufacturing tolerance (µm)	+3-3 Valmistustoleranssi µm Manufacturing tolerance (µm)
	A01 Leikkuugeometria Cutting geometry	A01 Leikkuugeometria Cutting geometry	A01 Leikkuugeometria Cutting geometry	A01 Leikkuugeometria Cutting geometry	A01 Leikkuugeometria Cutting geometry
Option	U2 Nano viimeistely Edge preparation	U1 Nano viimeistely Edge preparation	U1 Nano viimeistely Edge preparation	U2 Nano viimeistely Edge preparation	U2 Nano viimeistely Edge preparation
	U2 Nano viimeistely Edge preparation	U1 Nano viimeistely Edge preparation	U1 Nano viimeistely Edge preparation	U2 Nano viimeistely Edge preparation	U2 Nano viimeistely Edge preparation
	F05 Materiaali Lisää tietoa "Reaming Technology Guide" katalogista Cutting material For details see "Reaming Technology Guide"	F05 Materiaali Lisää tietoa "Reaming Technology Guide" katalogista Cutting material For details see "Reaming Technology Guide"	F05 Materiaali Lisää tietoa "Reaming Technology Guide" katalogista Cutting material For details see "Reaming Technology Guide"	F05 Materiaali Lisää tietoa "Reaming Technology Guide" katalogista Cutting material For details see "Reaming Technology Guide"	F05 Materiaali Lisää tietoa "Reaming Technology Guide" katalogista Cutting material For details see "Reaming Technology Guide"
	12R Pinnoite Lisää tietoa "Reaming Technology Guide" katalogista Coating For details see "Reaming Technology Guide"	14R Pinnoite Lisää tietoa "Reaming Technology Guide" katalogista Coating For details see "Reaming Technology Guide"	14R Pinnoite Lisää tietoa "Reaming Technology Guide" katalogista Coating For details see "Reaming Technology Guide"	12R Pinnoite Lisää tietoa "Reaming Technology Guide" katalogista Coating For details see "Reaming Technology Guide"	12R Pinnoite Lisää tietoa "Reaming Technology Guide" katalogista Coating For details see "Reaming Technology Guide"
	1 1 = ohut pinnoite 2 = Paksu pinnoite 1 = thin coating 2 = thick coating	1 1 = ohut pinnoite 2 = Paksu pinnoite 1 = thin coating 2 = thick coating	1 1 = ohut pinnoite 2 = Paksu pinnoite 1 = thin coating 2 = thick coating	1 1 = ohut pinnoite 2 = Paksu pinnoite 1 = thin coating 2 = thick coating	1 1 = ohut pinnoite 2 = Paksu pinnoite 1 = thin coating 2 = thick coating

Ø 7.600 – 13.100 mm

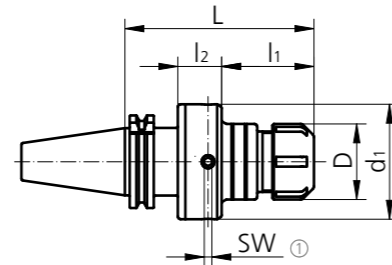


Kompensaatio-istukka ER-holkilla

Compensation Collet Chuck

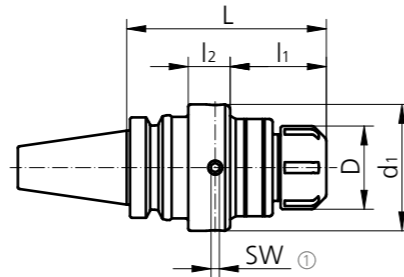
DIN 69871-AD

Size	Type	Ø-Range	L	l ₁	l ₂	D	d ₁	SW	kg	Order Number	Stock
SK 40	ER32	3.0 - 20.0	120	56	29	50	76	5	2.2	AND60 40A 32 120	▲
SK 50	ER32	3.0 - 20.0	120	61	24	50	76	5	4.1	AND60 50A 32 120	▲



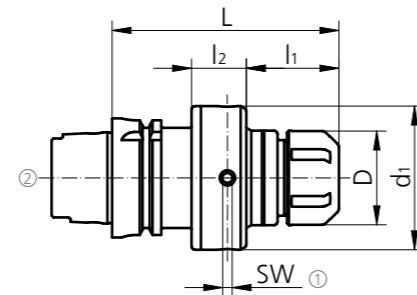
MAS-BT JIS 6339-AD

Size	Type	Ø-Range	L	l ₁	l ₂	D	d ₁	SW	kg	Order Number	Stock
BT 40	ER32	3.0 - 20.0	120	54	29	50	76	5	2.2	ANT60 40A 32 120	▲
BT 50	ER32	3.0 - 20.0	120	58	24	50	76	5	4.5	ANT60 50A 32 120	▲



DIN 69893-HSK-A

Size	Type	Ø-Range	L	l ₁	l ₂	D	d ₁	SW	kg	Order Number	Stock
HSK 63	ER32	3.0 - 20.0	120	49	29	50	76	5	2	ANH60 63A 32 120	▲
HSK 100	ER32	3.0 - 20.0	120	67	24	50	76	5	3.4	ANH60 100A 32 120	▲



Toimitus sisältää: Tiivisterenkaalle soveltuvan ER mutterin sekä vesiputken

Scope of delivery: Collet nut for seal disk and coolant tube included

Holkit ja tiivisterenkaat sivu 22

Collets and seal disc page 22

Varaosat

Spare Parts

Size	Order Number	Stock
63	C00 03 44	●

Vesiputki

Coolant Tube

Size	Order Number	Stock
63	H00 63 01	●
100	H00 100 01	●

- Varastossa
On stock
- ▲ Lyhyellä toimitusajalla
Short-term availability
- Saatavilla tilauksesta
Availability on request

Kaikki mitat metrisinä
All dimensions in mm

Ø 7.600 – 13.100 mm

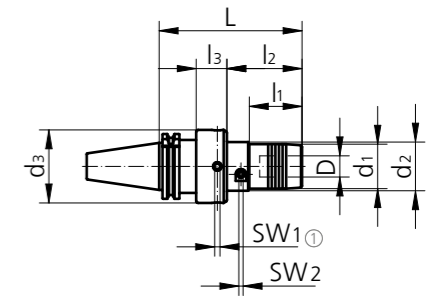


Hydrauli-istukka kompensoinnilla

Compensating Hydraulic Chuck

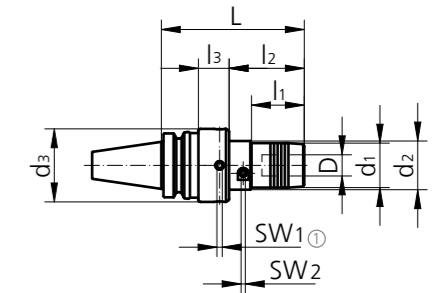
DIN 69871-AD

Size	L	l ₁	l ₂	l ₃	D	d ₁	d ₂	d ₃	SW ₁	SW ₂	kg	Order Number	Stock
SK 40	135	46	71	29	12	32	52	76	5	4	2.5	AND65 40A 12 135	●
SK 50	160	66	92	34	12	32	52	76	5	4	4.8	AND65 50A 12 160	●



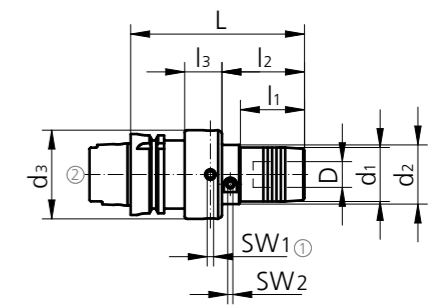
MAS-BT JIS 6339-AD

Size	L	l ₁	l ₂	l ₃	D	d ₁	d ₂	d ₃	SW ₁	SW ₂	kg	Order Number	Stock
BT 40	135	46	71	29	12	32	52	76	5	4	2.6	ANT65 40A 12 135	●
BT 50	135	46	73	24	12	32	52	76	5	4	4.8	ANT65 50A 12 135	●



DIN 69893-HSK-A

Size	L	l ₁	l ₂	l ₃	D	d ₁	d ₂	d ₃	SW ₁	SW ₂	kg	Order Number	Stock
HSK 63	135	46	64	29	12	32	52	76	5	4	2.3	ANH65 63A 12 135	●
HSK 100	135	46	82	24	12	32	52	76	5	4	3.5	ANH65 100A 12 135	●



Toimitus sisältää vesiputken

Scope of delivery: Coolant tube included

Holkit sivulla 22.

Reducers are on page 22.

Varaosat

Spare Parts

D	Order Number	Stock
12	C00 03 44	●
20	C00 03 44	●
32	C00 03 45	●

Vesiputki

Coolant Tube

Size	Order Number	Stock
63	H00 63 01	●
100	H00 100 01	●

- Varastossa
On stock
- ▲ Lyhyellä toimitusajalla
Short-term availability
- Saatavilla tilauksesta
Availability on request

Kaikki mitat metrisinä
All dimensions in mm

Ø 7.600 – 13.100 mm

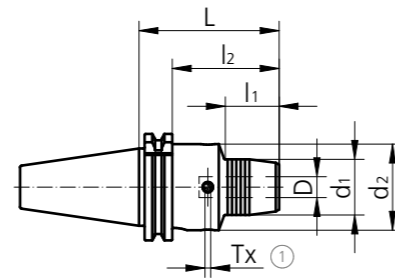


Schunk "Tendo Zero" kompensatiopidin

Schunk "Tendo Zero" Compensating Hydraulic Chuck

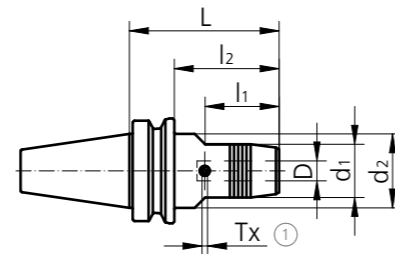
DIN 69871-AD/B

Size	L	l ₁	l ₂	D	d ₁	d ₂	Tx	kg	Schunk Order Number	Stock
SK 40	81	34	62	20	42	50	T15	1.4	204266 Z	▲
SK 50	81	34	62	20	42	50	T15	3.3	204246 Z	▲



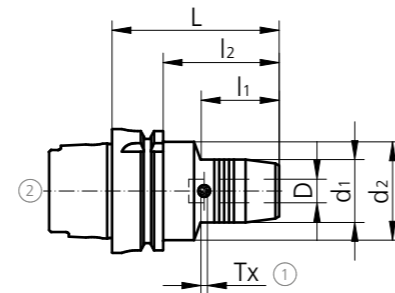
MAS-BT JIS 6339-AD/B

Size	L	l ₁	l ₂	D	d ₁	d ₂	Tx	kg	Schunk Order Number	Stock
BT 30	90	48	63	20	42	45	T15	1.5	205636 Z	▲
BT 40	90	48	63	20	42	45	T15	1.5	204445 Z	▲
BT 50	90	34	52	20	42	45	T15	4	204457 Z	▲



DIN 69893-HSK-A

Size	L	l ₁	l ₂	D	d ₁	d ₂	Tx	kg	Schunk Order Number	Stock
HSK 63	90	48	64	20	42	50	T15	1.3	204056 Z*	▲
HSK 100	105	59	76	20	42	50	T15	2.8	204066 Z*	▲



* Vesiputki ei sisälly hintaan.

* Coolant tube is not included.

Holkit sivulla 22.

Lisätietoja www.schunk.com

Reducers are on page 22.

For further dimensions see www.schunk.com

Varaosat

Spare Parts

Size	Order Number
63	H00 63 01
100	H00 100 01

Vesiputki

Coolant Tube

Size	Order Number
63	H00 63 01
100	H00 100 01

● Varastossa
On stock

▲ Lyhyellä toimitusajalla
Short-term availability

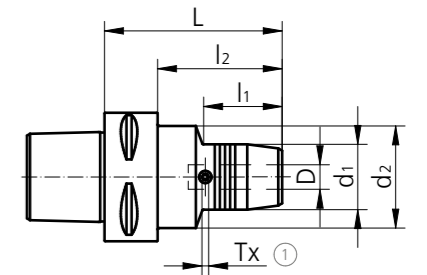
○ Saatavilla tilauksesta
Availability on request

● Kaikki mitat metrisinä
All dimensions in mm

Ø 7.600 – 13.100 mm

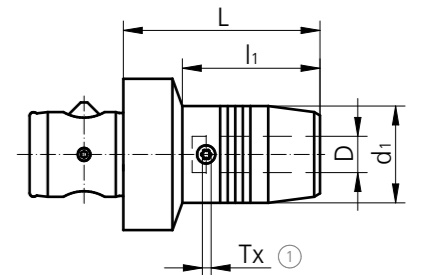
DIN 26623-1-PSC (Polygon Shank)

Size	L	l ₁	l ₂	D	d ₁	d ₂	Tx	kg	Schunk Order Number	Stock
PSC 50	90	52	-	20	42	50	T15	1.05	201846 Z	▲
PSC 63	97	55	-	20	42	63	T15	1.6	201856 Z	▲



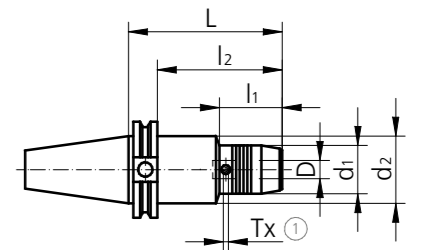
ABS-H

Size	L	l ₁	l ₂	D	d ₁	d ₂	Tx	kg	Schunk Order Number	Stock
ABS 50	75	58	-	20	42	-	T15	0.9	204576 Z	▲



ASME B5.50-CAT-AD/B

Size	L	l ₁	l ₂	D	d ₁	d ₂	Tx	kg	Schunk Order Number	Stock
CAT 40	102	50	83	20	38	45	T15	2	203666 Z	○
CAT 50	102	50	83	20	42	70	T15	2.8	204666 Z	○



Holkit sivulla 22.

Lisätietoja www.schunk.com

Reducers are on page 22.

For further dimensions see www.schunk.com

Varaosat

Spare Parts

Size	Order Number
63	H00 63 01
100	H00 100 01

● Varastossa
On stock

▲ Lyhyellä toimitusajalla
Short-term availability

○ Saatavilla tilauksesta
Availability on request

● Kaikki mitat metrisinä
All dimensions in mm

Ø 7.600 – 13.100 mm



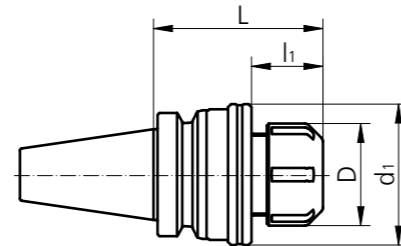
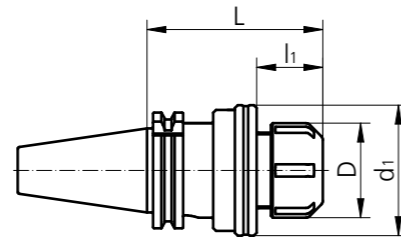
Uiva-istukka Floating Chuck

DIN 69871-AD

Size	Type	Ø-Range	L	l ₁	D	d ₁	OZ	kg	Order Number	Stock
SK 40	ER25	3.0 - 16.0	88	26	42	57	± 1	-	PD60 40A 25 088	○
SK 50	ER25	3.0 - 16.0	88	26	42	57	± 1	-	PD60 50A 25 088	○

MAS-BT JIS 6339-AD

Size	Type	Ø-Range	L	l ₁	D	d ₁	OZ	kg	Order Number	Stock
BT 30	ER20	3.0 - 13.0	70	-	35	-	± 1	-	PT60 30A 20 070	○
BT 40	ER25	3.0 - 16.0	78	26	42	57	± 1	-	PT60 40A 25 078	○
BT 50	ER25	3.0 - 16.0	88	26	42	57	± 1	-	PT60 50A 25 088	○

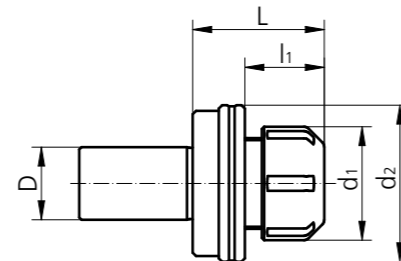


Uiva-istukka sorveille Floating Chuck for Lathes



Cylindrical Shaft DIN 1835-A

Size	Type	Ø-Range	L	l ₁	D	d ₁	d ₂	OZ	kg	Order Number	Stock
ZS 16	ER16	3.0 - 10.0	44	22	16	28	42	± 1	0.3	PZ60 16 16 044	●
ZS 20	ER16	3.0 - 10.0	44	22	20	28	42	± 1	0.3	PZ60 16 20 044	●



Toimitus sisältää tiivistemallisen mutterin
Scope of delivery: Collet nut for seal disk included

Holkit ja tiivistereenkaat sivu 22
Collets and seal disc page 22

ZS **Sylinterimalli**
Cylindrical shank

OZ **Joustomatka**
Floating range

● Varastossa On stock
▲ Lyhyellä toimitusajalla Short-term availability
○ Saatavilla tilauksesta Availability on request

Kaikki mitat metrisinä
All dimensions in mm

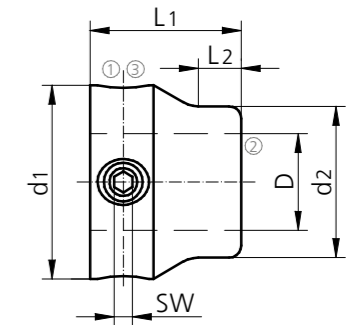
Ø 7.600 – 13.100 mm



Säätöholkki Compensation Sleeve

System Size	L1	L2	D	d1	d2	SW	Order Number	Stock
RXs 08	16	3	6	20	16	2.5	MHs08/10 06 20 016	●
RXs 10	16	3	6	20	16	2.5	MHs08/10 06 20 016	●
RXs 11	18	4	8	22	16	2.5	MHs11/13 08 22 018	●
RXs 13	18	4	8	22	16	2.5	MHs11/13 08 22 018	●

⚠ Ei soveltu käytettäväksi kovametallipitimiin kanssa
Not applicable for carbide insert holders



Varaosat Spare Parts

System Size	①	②	③
RXs 08	C00 96 32	D00 05 00	G00 02 03
RXs 10	C00 96 32	D00 05 00	G00 02 03
RXs 11	C00 96 32	D00 05 01	G00 02 03
RXs 13	C00 96 32	D00 05 01	G00 02 03

● Varastossa On stock
▲ Lyhyellä toimitusajalla Short-term availability
○ Saatavilla tilauksesta Availability on request

Kaikki mitat metrisinä
All dimensions in mm

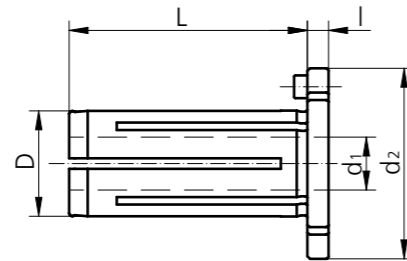
Lisävarusteita

Accessories

Holkit hydraulipitimiin

Reducers for Hydro-Compensation Chuck

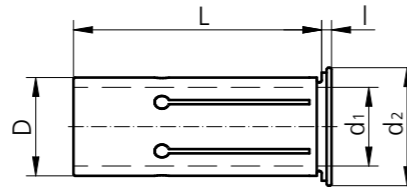
D	d ₁	L	l	d ₂	Order Number	Stock
12	6	49	4	26	67 12 06	●
12	8	49	4	26	67 12 08	●



Holkit "Schunk-hydraulikompenaatiopitimiin"

Reducers for Hydro-Compensation Chuck "Schunk"

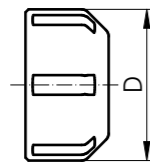
D	d ₁	L	l	d ₂	Order Number	Stock
12	6	45	2	16.5	0207913	●
12	8	45	2	16.5	0207915	●
20	6	50.5	2	24.0	0207923	●
20	8	50.5	2	24.0	0207925	●



ER mutterit tiivisterenkaille

Collet Nut for Seal Disk

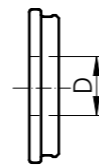
Type	D	Thread	Order Number	Stock
ER16	28	M22 x 1.5	20.107.210	●
ER20	34	M25 x 1.5	20.107.310	●
ER25	42	M32 x 1.5	20.107.410	●
ER32	50	M40 x 1.5	20.107.510	●



Tiiviste kiinnitysmutterille

Seal Disc for Collet Nut

Type	D	Order Number	Stock
ER16	3.0 - 10.0	20.107.21XXX	●
ER20	3.0 - 13.0	20.107.31XXX	●
ER25	3.0 - 16.0	20.107.41XXX	●
ER32	3.0 - 20.0	20.107.51XXX	●

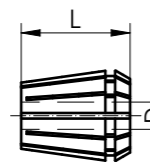


XXX = \emptyset D \emptyset insert holders
Example: D = 12 = 20.107.41120

ER-holkit

Collets

Type	D	L	Order Number	Stock
ER16	3.0 - 10.0	27.5	62 16 XX	●
ER20	3.0 - 13.0	31.5	62 20 XX	●
ER25	3.0 - 16.0	35	62 25 XX	●
ER32	3.0 - 20.0	40	62 32 XX	●



XX = \emptyset D Example: D = 12 = 62 25 12

Haka-avaimet ER-holkeille

Key for Collet Nut

Type	Order Number	Stock
ER16	00 05 13	●
ER20	00 05 12	●
ER25	00 05 05	●
ER32	00 05 02	●



● Varastossa
On stock

▲ Lyhyellä toimitusajalla
Short-term availability

○ Saatavilla tilauksesta
Availability on request

Kaikki mitat metrisinä
All dimensions in mm

Lisävarusteita

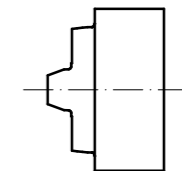
Accessories



Asetusrenkas kellotusta varten

Run-Out Indicating Insert

System Size	Order Number	Stock
RXs 08	RXsC08 06 02	●
RXs 10	RXsC10 06 02	●
RXs 11	RXsC11 06 03	●
RXs 13	RXsC13 06 03	●



Torx® momenttiavain

Torx®-Torque Wrench

System Size	Clamping Torque	Torx® Size	Order Number	Stock
RXs 08	0.6 Nm	T6	G00 40 15	●
RXs 10	0.9 Nm	T7	G00 40 14	●
RXs 11	1.4 Nm	T9	G00 40 16	●
RXs 13	2.0 Nm	T10	G00 40 17	●



▲ Kiristys sallittu vain momenttiavaimella
Tightening screw with torque wrench only

● Varastossa
On stock

▲ Lyhyellä toimitusajalla
Short-term availability

○ Saatavilla tilauksesta
Availability on request

Kaikki mitat metrisinä
All dimensions in mm

Lisävarusteita

Accessories

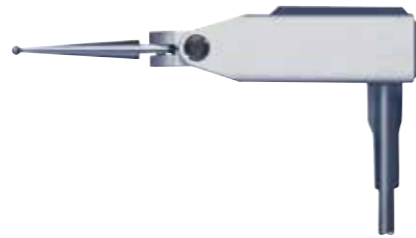
Mittavälineet

Measuring Device

Type	Description	Order Number	Stock
Twin T10	Elektroninen heittokello, sisältää patterit Electronic measuring instrument, batteries incl.	04430013	○
LRC 6, AA	Patterit Batteries (3 piece)	04768002	○
GT 31	Mittapää Lever probe	03210802	○
MGA	Magneettijalka Magnetic articulated arm	01639022	○



Twin T10



GT 31



MGA

● Varastossa
On stock

▲ Lyhyellä toimitusajalla
Short-term availability

○ Saatavilla tilauksesta
Availability on request

Kaikki mitat metrisinä
All dimensions in mm

URMA Reaming
RX medium

Ø 11.900 – 35.600 mm
Ø 35.601 – 140.600 mm

Ø 11.900 – 35.600 mm
Ø 35.601 – 140.600 mm

URMA Reaming RX medium

Ø 11.900 – 35.600 mm	Pages 38 – 43	Page 59	Page 59	Pages 35 – 37	Page 30
Ø 35.601 – 140.600 mm	Pages 54 – 57	Page 53	Page 52	Page 51	Pages 46 – 47
		 optional	 optional		
	Pages 48 – 49				

Ø 11.900 – 35.600 mm

Teräpalat

Inserts

Suorahampaiset teräpalat (RXG)

Straight Fluted Inserts (RXG)

System Size	Ø-Range	B	z	MB	VE	Order Number	Stock
RX 016	11.900 - 15.600	4.3	6	3	4	RXG...	▲
RX 019	15.601 - 18.600	4.3	6	3	4	Order example	▲
RX 024	18.601 - 23.600	4.3	6	3	4	page 33	▲
RX 029	23.601 - 28.600	4.3	8	3	2		▲
RX 036	28.601 - 35.600	4.3	8	3	1		▲

Suorahampaiset teräpalat (RXG) "SD" Malli

Straight Fluted Inserts "SD" (RXG)

System Size	Ø-Range	B	z	MB	VE	Order Number	Stock
RX 016	11.900 - 15.600	4.3	6	3	4	RXG... ..H	▲
RX 019	15.601 - 18.600	4.3	6	3	4	Order example p. 33	▲

! Soveltuu vain keskiruuvilla olevaan "SD" pidinmalliin
Can only be used with insert holder version "SD" with central clamping screw

Työntävä teräpala (RXL)

Left Helical Fluted Inserts (RXL)

System Size	Ø-Range	B	z	MB	VE	Order Number	Stock
RX 016	11.900 - 15.600	4.3	6	3	4	RXL...	▲
RX 019	15.601 - 18.600	4.3	6	3	4	Order example	▲
RX 024	18.601 - 23.600	4.3	6	3	4	page 33	▲
RX 029	23.601 - 28.600	4.3	8	3	2		▲
RX 036	28.601 - 35.600	4.3	8	3	1		▲

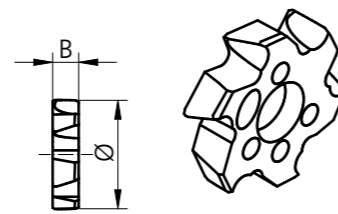
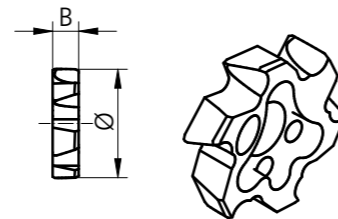
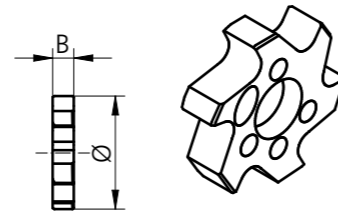
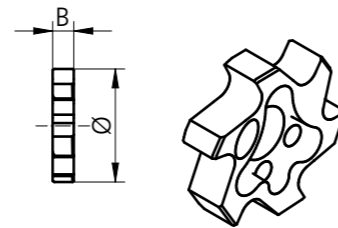
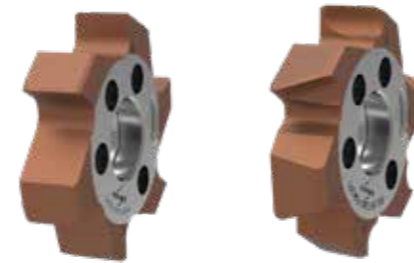
Työntävä teräpala (RXL) "SD" Malli

Left Helical Fluted Inserts "SD" (RXL)

System Size	Ø-Range	B	z	MB	VE	Order Number	Stock
RX 016	11.900 - 15.600	4.3	6	3	4	RXL... ..H	▲
RX 019	15.601 - 18.600	4.3	6	3	4	Order example p. 33	▲

! Soveltuu vain keskiruuvilla olevaan "SD" pidinmalliin
Can only be used with insert holder version "SD" with central clamping screw

z Särmien lkm z Number of teeth
MB Minimitilauusmäärä MB Minimum order quantity
VE Pakkausko VE Packaging quantity



Ø 35.601 – 140.600 mm

Teräpalat

Inserts

Suorahampaiset teräpalat (RXG)

Straight Fluted Inserts (RXG)

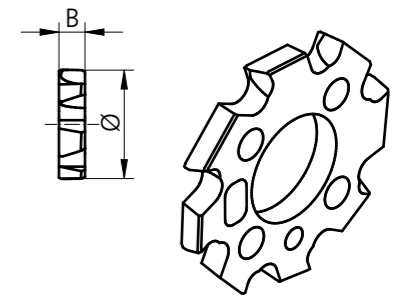
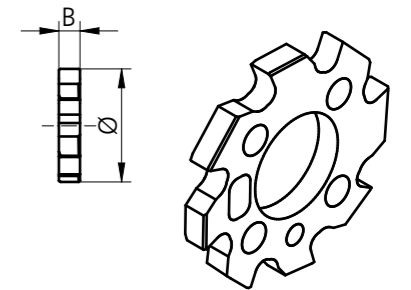
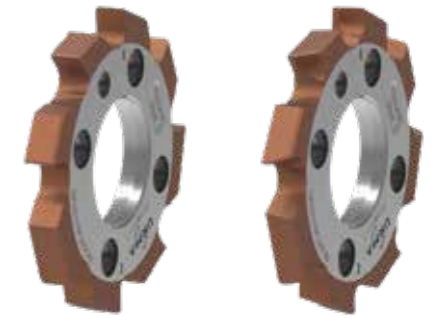
System Size	Ø-Range	B	z	MB	VE	Order Number	Stock
RX 044	35.601 - 43.600	4.3	8	2	1	RXG...	▲
RX 052	43.601 - 51.600	4.3	10	2	1	Order example	▲
RX 061	51.601 - 60.600	4.3	10	2	1	page 33	▲
RX 081	60.601 - 80.600	4.3	12	2	1		▲
RX 101	80.601 - 100.600	4.3	12	2	1		▲
RX 121	100.601 - 120.600	5.3	12	2	1		▲
RX 141	120.601 - 140.600	5.3	12	2	1		▲

Työntävä teräpala (RXL)

Left Helical Fluted Inserts (RXL)

System Size	Ø-Range	B	z	MB	VE	Order Number	Stock
RX 044	35.601 - 43.600	4.3	8	2	1	RXL...	▲
RX 052	43.601 - 51.600	4.3	10	2	1	Order example	▲
RX 061	51.601 - 60.600	4.3	10	2	1	page 33	▲
RX 081	60.601 - 80.600	4.3	12	2	1		▲
RX 101	80.601 - 100.600	4.3	12	2	1		▲
RX 121	100.601 - 120.600	5.3	12	2	1		▲
RX 141	120.601 - 140.600	5.3	12	2	1		▲

z Särmien lkm z Number of teeth
MB Minimitilauusmäärä MB Minimum order quantity
VE Pakkausko VE Packaging quantity



● Varastossa ▲ Lyhyellä toimitusajalla ○ Saatavilla tilauksesta
On stock Short-term availability Availability on request

Kaikki mitat metrisinä
All dimensions in mm

Tietoa teräpalan mitoituksesta

Explanation of Insert Size

Huomioitavaa tilauksien yhteydessä reiän toleranssista. Halkaisija määritetään URMA standardin mukaisesti. Riippuen reiän toleranssialueesta, lopullinen halkaisija on 65% - 80% tietämällä kokonaistoleranssista.

Esimerkki vakioteräpalasta

RXG42.2H7-A01U2 F0514R1
Teräpala hiotaan mittaan **Ø 42,220 mm**

RXG18.2+20-10-A01U1 F0514R1H
Teräpala hiotaan mittaan **Ø 18,215 mm**

Q merkitty teräpala kertoo, että kyseessä on erityinen toleranssi johon on tarpeen tehdä tarkemmalla hionnalla oleva teräpala.

Esimerkki Q teräpalasta

RXG20.020Q+3-3-A01U1 F0512R1
Teräpala hiotaan mittaan **Ø 20,020 mm**

For orders with specifications of bore tolerance, the diameter is defined by URMA standard. Depending on tolerance range, the final diameter will be within 65% to 80% of the total tolerance.

Examples Standard Insert Designation

RXG42.2H7-A01U2 F0514R1
insert size on **Ø 42,220 mm**

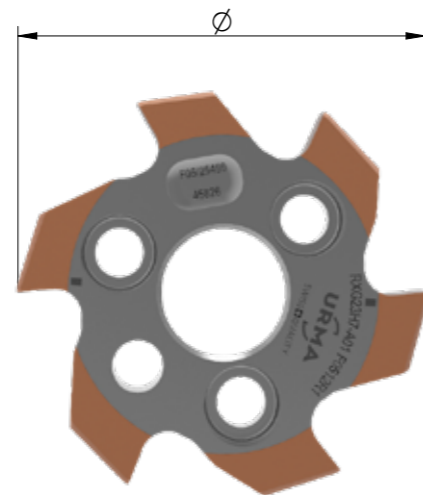
RXG18.2+20-10-A01U1 F0514R1H
insert size on **Ø 18,215 mm**

A Q-insert designation is to be selected for any specific insert dimension. Opposed to standard inserts where all tolerances refer to the bore tolerance, Q-inserts indicate the required insert diameter (target size).

Q-inserts are recommended for special applications where standard tolerance ranges are not applicable.

Example Q-Insert Designation

RXG20.020Q+3-3-A01U1 F0512R1
insert size on **Ø 20,020 mm**



Tilausesimerkkejä

Order Example

	Reiän halkaisija Bore diameter	ISO Toleranssi ISO bore tolerances	Reiän toleranssi Bore tolerance in µm	Teräpalan halkaisija Insert diameter	Haluttu halkaisija (Q teräpala) Target size (Q-Insert)
Example	Tilausesimerkkejä Order example RXG42.2H7-A01U2 F0514R1	Tilausesimerkkejä Order example RXG18.2+20-10-A01U1 F0514R1H	Tilausesimerkkejä Order example RXG20.020Q+3-3-A01U1 F0512R1	Example	Example
	RX RX medium tuotemerkintä RX medium system designation	RX RX medium tuotemerkintä RX medium system designation	RX RX medium tuotemerkintä RX medium system designation	RX RX medium tuotemerkintä RX medium system designation	RX RX medium tuotemerkintä RX medium system designation
	G Hammasmuoto (G = Suora; L = Nousullinen) Flute form (G = straight; L = left-hand helix)	G Hammasmuoto (G = Suora; L = Nousullinen) Flute form (G = straight; L = left-hand helix)	G Hammasmuoto (G = Suora; L = Nousullinen) Flute form (G = straight; L = left-hand helix)	G Hammasmuoto (G = Suora; L = Nousullinen) Flute form (G = straight; L = left-hand helix)	G Hammasmuoto (G = Suora; L = Nousullinen) Flute form (G = straight; L = left-hand helix)
Diameter	42.2 Halkaisija (mm) Diameter (mm)	18.2 Halkaisija (mm) Diameter (mm)	20.020 Teräpalan halkaisija (mm) Insert diameter (mm)	20.020 Teräpalan halkaisija (mm) Insert diameter (mm)	20.020 Teräpalan halkaisija (mm) Insert diameter (mm)
	H7 Toleranssi ISO vakio Tolerance in ISO standard	+20-10 Reiän toleranssi (µm) Bore tolerance (µm)	Q Teräpalan koodi Code for target size insert	Q Teräpalan koodi Code for target size insert	Q Teräpalan koodi Code for target size insert
	A01 Leikkuugeometria Cutting geometry	A01 Leikkuugeometria Cutting geometry	+3-3 Valmistustoleranssi (µm) Manufacturing tolerance (µm)	+3-3 Valmistustoleranssi (µm) Manufacturing tolerance (µm)	+3-3 Valmistustoleranssi (µm) Manufacturing tolerance (µm)
Option	U2 Nano viimeistely Lisää tietoa "Reaming Technology Guide" katalogista Edge preparation For details see "Reaming Technology Guide"	U1 Nano viimeistely Lisää tietoa "Reaming Technology Guide" katalogista Edge preparation For details see "Reaming Technology Guide"	A01 Leikkuugeometria Cutting geometry	A01 Leikkuugeometria Cutting geometry	A01 Leikkuugeometria Cutting geometry
	F05 Materiaali Lisää tietoa "Reaming Technology Guide" katalogista Cutting material For details see "Reaming Technology Guide"	F05 Materiaali Lisää tietoa "Reaming Technology Guide" katalogista Cutting material For details see "Reaming Technology Guide"	U1 Nano viimeistely Lisää tietoa "Reaming Technology Guide" katalogista Edge preparation For details see "Reaming Technology Guide"	U1 Nano viimeistely Lisää tietoa "Reaming Technology Guide" katalogista Edge preparation For details see "Reaming Technology Guide"	U1 Nano viimeistely Lisää tietoa "Reaming Technology Guide" katalogista Edge preparation For details see "Reaming Technology Guide"
	14R Pinnoite Lisää tietoa "Reaming Technology Guide" katalogista Coating For details see "Reaming Technology Guide"	14R Pinnoite Lisää tietoa "Reaming Technology Guide" katalogista Coating For details see "Reaming Technology Guide"	F05 Materiaali Lisää tietoa "Reaming Technology Guide" katalogista Cutting material For details see "Reaming Technology Guide"	F05 Materiaali Lisää tietoa "Reaming Technology Guide" katalogista Cutting material For details see "Reaming Technology Guide"	F05 Materiaali Lisää tietoa "Reaming Technology Guide" katalogista Cutting material For details see "Reaming Technology Guide"
	1 1 = ohut pinnoite 2 = Paksu pinnoite 1 = thin coating 2 = thick coating	1 1 = ohut pinnoite 2 = Paksu pinnoite 1 = thin coating 2 = thick coating	14R Pinnoite Lisää tietoa "Reaming Technology Guide" katalogista Coating For details see "Reaming Technology Guide"	14R Pinnoite Lisää tietoa "Reaming Technology Guide" katalogista Coating For details see "Reaming Technology Guide"	14R Pinnoite Lisää tietoa "Reaming Technology Guide" katalogista Coating For details see "Reaming Technology Guide"
Option	H* H = SD aihio (ilman merkintää perus aihio) H = SD blank (without H = regular blank)	H* H = SD aihio (ilman merkintää perus aihio) H = SD blank (without H = regular blank)	1 1 = ohut pinnoite 2 = Paksu pinnoite 1 = thin coating 2 = thick coating	1 1 = ohut pinnoite 2 = Paksu pinnoite 1 = thin coating 2 = thick coating	1 1 = ohut pinnoite 2 = Paksu pinnoite 1 = thin coating 2 = thick coating
	H* H = SD aihio (ilman merkintää perus aihio) H = SD blank (without H = regular blank)	H* H = SD aihio (ilman merkintää perus aihio) H = SD blank (without H = regular blank)	H* H = SD aihio (ilman merkintää perus aihio) H = SD blank (without H = regular blank)	H* H = SD aihio (ilman merkintää perus aihio) H = SD blank (without H = regular blank)	H* H = SD aihio (ilman merkintää perus aihio) H = SD blank (without H = regular blank)

* SD aihio "H" vain RX016 ja RX019 malleihin. Katso luettelon sivu 30

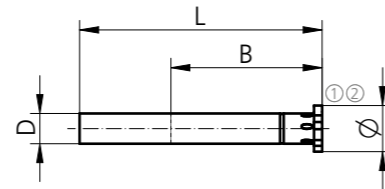
* SD blank "H" only for RX016 and RX019 see "URMA Reaming" catalogue on page 30

Ø 11.900 – 35.600 mm



Teräpalapitimet

Insert Holders



Lyhyt malli (Teräs)

Short Version (Steel)



System Size	Ø-Range	L	B	D _{h6}	kg	Order Number "D"	Order Number "B"	Stock
RX 016	11.900 - 15.600	100	60	10	0.06	RXD16 10 100	RXB16 10 100	●
RX 019	15.601 - 18.600	115	70	12	0.1	RXD19 12 115	RXB19 12 115	●
RX 024	18.601 - 23.600	128	80	16	0.2	RXD24 16 128	RXB24 16 128	●
RX 029	23.601 - 28.600	145	95	20	0.35	RXD29 20 145	RXB29 20 145	●
RX 036	28.601 - 35.600	170	110	25	0.65	RXD36 25 170	RXB36 25 170	●

Pitkä malli (Teräs)

Long Version (Steel)



System Size	Ø-Range	L	B	D _{h6}	kg	Order Number "D"	Order Number "B"	Stock
RX 016	11.900 - 15.600	160	120	10	0.1	RXD16 10 160	RXB16 10 160	●
RX 019	15.601 - 18.600	185	140	12	0.15	RXD19 12 185	RXB19 12 185	●
RX 024	18.601 - 23.600	208	160	16	0.3	RXD24 16 208	RXB24 16 208	●
RX 029	23.601 - 28.600	240	190	20	0.55	RXD29 20 240	RXB29 20 240	●
RX 036	28.601 - 35.600	274	214	25	1	RXD36 25 274	RXB36 25 274	●

Pitkä malli (kovametalli)

Long Version (Carbide)



System Size	Ø-Range	L	b	D _{h6}	kg	Order Number "D"	Order Number "B"	Stock
RX 016	11.900 - 15.600	160	120	10	0.2	RXD16 10 160HM	RXB16 10 160HM	●
RX 019	15.601 - 18.600	185	140	12	0.3	RXD19 12 185HM	RXB19 12 185HM	●
RX 024	18.601 - 23.600	208	160	16	0.6	RXD24 16 208HM	RXB24 16 208HM	●
RX 029	23.601 - 28.600	240	190	20	1.1	RXD29 20 240HM	RXB29 20 240HM	●
RX 036	28.601 - 35.600	274	214	25	1.9	RXD36 25 274HM	RXB36 25 274HM	●

Toimitus sisältää: Varaosaruuvit ja Torx® avaimen (suositellaan momenttiavainta s62) Sivulla 38 kompensatio pitimet

Scope of delivery: 1 Set of replacement screws and 1 Torx® screw driver
(torque screw driver is recommended, page 62) see page 38 for compensation holder

Varaosat

Spare Parts

System Size	①	②
RX 016	C00 90 00 (3x)	G00 20 01
RX 019	C00 90 00 (3x)	G00 20 01
RX 024	C00 90 01 (3x)	G00 20 02
RX 029	C00 90 01 (4x)	G00 20 02
RX 036	C00 90 01 (4x)	G00 20 02

RXD = Läpireikä
RXB = Pohjareikä
HM = Kovametallivarsi

RXD = Through bore
RXB = Blind bore
HM = with carbide shanks

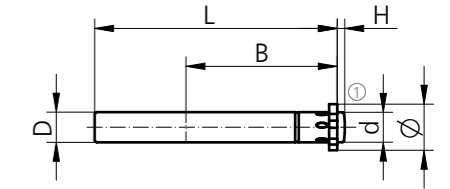
Kaikki terävarret ovat lyhennettävissä haluttuun mittaan (Lisäkulu)
All insert holders can be shortened to the optimal length on request (for surcharge)

Ø 11.900 – 35.600 mm



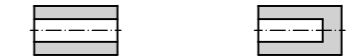
Teräpalanpidin isolla kiinnitysruuvilla "SD"

Insert Holder with a Central Clamping Screw "SD"



Teräksinen teräpalanpidin (lyhytmalli) isolla kiinnitysruuvilla "SD"

Short Version (Steel) with a Central Clamping Screw "SD"



System Size	Ø-Range	L	B	D _{h6}	d	H	Order Number "D"	Order Number "B"	Stock
RX 016	11.900-15.600	100	60	10	9.8	2.5	RXD16 10 100SD	RXB16 10 100SD	●
RX 019	15.601-18.600	115	70	12	11.8	3.0	RXD19 12 115SD	RXB19 12 115SD	●
RX 024	18.601-23.600	128	80	16	15.8	4.0	RXD24 16 128SD	RXB24 16 128SD	●
RX 029	23.601-28.600	145	95	20	15.8	4.0	RXD29 20 145SD	RXB29 20 145SD	●
RX 036	28.601-35.600	170	110	25	24.5	4.0	RXD36 25 170SD	RXB36 25 170SD	●

Teräksinen teräpalanpidin (pitkämalli) isolla kiinnitysruuvilla "SD"

Long Version (Steel) with a Central Clamping Screw "SD"



System Size	Ø-Range	L	B	D _{h6}	d	H	Order Number "D"	Order Number "B"	Stock
RX 016	11.900-15.600	160	120	10	9.8	2.5	RXD16 10 160SD	RXB16 10 160SD	●
RX 019	15.601-18.600	185	140	12	11.8	3.0	RXD19 12 185SD	RXB19 12 185SD	●
RX 024	18.601-23.600	208	160	16	15.8	4.0	RXD24 16 208SD	RXB24 16 208SD	●
RX 029	23.601-28.600	240	190	20	15.8	4.0	RXD29 20 240SD	RXB29 20 240SD	●
RX 036	28.601-35.600	274	214	25	24.5	4.0	RXD36 25 274SD	RXB36 25 274SD	●

Kovametalli teräpalapitidin (pitkämalli) isolla kiinnitysruuvilla "SD"

Long Version (Carbide) with a Central Clamping Screw "SD"



System Size	Ø-Range	L	B	D _{h6}	d	H	Order Number "D"	Order Number "B"	Stock
RX 016	11.900-15.600	160	120	10	9.8	2.5	RXD16 10 160HMSD	RXB16 10 160HMSD	●
RX 019	15.601-18.600	185	140	12	11.8	3.0	RXD19 12 185HMSD	RXB19 12 185HMSD	●
RX 024	18.601-23.600	208	160	16	15.8	4.0	RXD24 16 208HMSD	RXB24 16 208HMSD	●
RX 029	23.601-28.600	240	190	20	15.8	4.0	RXD29 20 240HMSD	RXB29 20 240HMSD	●
RX 036	28.601-35.600	274	214	25	24.5	4.0	RXD36 25 274HMSD	RXB36 25 274HMSD	●

Toimitus sisältää: Torx® avaimen (suositellaan momenttiavainta s62) Sivulla 38 kompensatio pitimet

Scope of delivery: 1 Torx® screw driver included
(torque screw driver is recommended, page 62) see page 38 for compensation holder

Varaosat D malli

Spare Parts "D"

System Size	①
RX 016	C00 90 22
RX 019	C00 90 23
RX 024	C00 90 24
RX 029	C00 90 24
RX 036	C00 90 25

Varaosat B malli

Spare Parts "B"

System Size	①
RX 016	C00 90 22
RX 019	C00 90 23B
RX 024	C00 90 24B
RX 029	C00 90 24B
RX 036	C00 90 25B

RXD = Läpireikä
RXB = Pohjareikä
HM = Kovametallivarsi

RXD = Through bore
RXB = Blind bore
HM = with carbide shanks

Kaikki terävarret ovat lyhennettävissä haluttuun mittaan (Lisäkulu)
All insert holders can be shortened to the optimal length on request (for surcharge)

Ø 11.900 – 35.600 mm



Kevennetyt teräpalapitimet

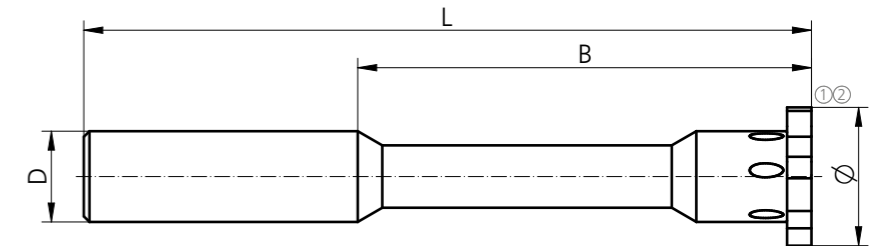
Insert Holders (Diameter Reduced)



System Size	Ø-Range	L	B	D _{h6}	kg	Order Number "D"	Order Number "B"	Stock
RX 016	11.900 - 15.600	100	60	10	0.05	RXD16 10 100F	RXB16 10 100F	●
RX 019	15.601 - 18.600	115	70	12	0.08	RXD19 12 115F	RXB19 12 115F	●
RX 024	18.601 - 23.600	128	80	16	0.14	RXD24 16 128F	RXB24 16 128F	●
RX 029	23.601 - 28.600	145	95	20	0.25	RXD29 20 145F	RXB29 20 145F	●
RX 036	28.601 - 35.600	170	110	25	0.45	RXD36 25 170F	RXB36 25 170F	●

SD versio saatavilla tilauksesta

SD version available on request



Varaosat

Spare Parts

System Size	①	②
RX 016	C00 90 00 (3x)	G00 20 01
RX 019	C00 90 00 (3x)	G00 20 01
RX 024	C00 90 01 (3x)	G00 20 02
RX 029	C00 90 01 (4x)	G00 20 02
RX 036	C00 90 01 (4x)	G00 20 02

● Varastossa
On stock

▲ Lyhyellä toimitusajalla
Short-term availability

○ Saatavilla tilauksesta
Availability on request

● Kaikki mitat metrisinä
All dimensions in mm

Ø 11.900 – 35.600 mm

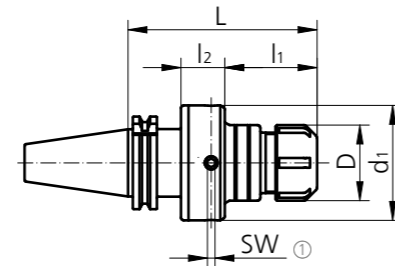


Kompensaatiopitimet ER-holkilla

Compensation Collet Chuck

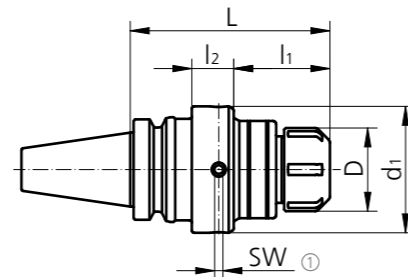
DIN 69871-AD

Size	Type	Ø-Range	L	l ₁	l ₂	D	d ₁	SW	kg	Order Number	Stock
SK 40	ER32	3.0 - 20.0	120	56	29	50	76	5	2.2	AND60 40A 32 120	●
SK 40	ER40	3.0 - 30.0	135	68	32	63	76	5	2.2	AND60 40A 40 135	●
SK 50	ER32	3.0 - 20.0	120	61	24	50	76	5	4.1	AND60 50A 32 120	●
SK 50	ER40	3.0 - 30.0	135	76	24	63	76	5	4.2	AND60 50A 40 135	●



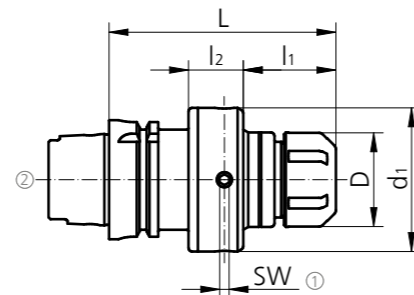
MAS-BT JIS 6339-AD

Size	Type	Ø-Range	L	l ₁	l ₂	D	d ₁	SW	kg	Order Number	Stock
BT 40	ER32	3.0 - 20.0	120	54	29	50	76	5	2.2	ANT60 40A 32 120	●
BT 40	ER40	3.0 - 30.0	135	66	32	63	75	5	2.3	ANT60 40A 40 135	●
BT 50	ER32	3.0 - 20.0	120	58	24	50	76	5	4.5	ANT60 50A 32 120	●
BT 50	ER40	3.0 - 30.0	135	73	24	63	76	5	4.5	ANT60 50A 40 135	●



DIN 69893-HSK-A

Size	Type	Ø-Range	L	l ₁	l ₂	D	d ₁	SW	kg	Order Number	Stock
HSK 63	ER32	3.0 - 20.0	120	49	29	50	76	5	2	ANH60 63A 32 120	●
HSK 63	ER40	3.0 - 30.0	135	64	29	63	76	5	1.9	ANH60 63A 40 135	●
HSK 100	ER32	3.0 - 20.0	120	67	24	50	76	5	3.4	ANH60 100A 32 120	●
HSK 100	ER40	3.0 - 30.0	135	82	24	63	76	5	3.3	ANH60 100A 40 135	●



Toimitus sisältää: Tiivisterenkaalle soveltuvan ER mutterin sekä vesiputken

Scope of delivery: Collet nut for seal disk and coolant tube included

Holkit ja tiivisterenkaat sivu 59

Collets and seal disc page 59

Varaosat

Spare Parts

Size	Order Number	Stock
12	C00 03 44	●
20	C00 03 44	●
32	C00 03 45	●

Vesiputki

Coolant Tube

Size	Order Number	Stock
63	H00 63 01	○
100	H00 100 01	○

Ø 11.900 – 35.600 mm

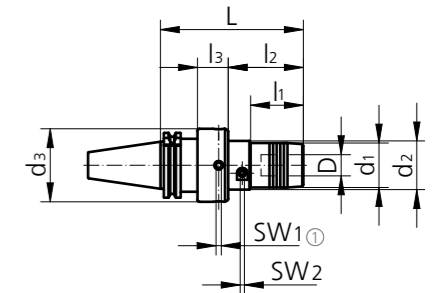


Hydraulikompensaatiopidin

Compensation Hydro Chuck

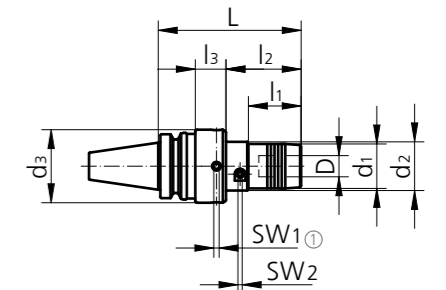
DIN 69871-AD

Size	L	l ₁	l ₂	l ₃	D	d ₁	d ₂	d ₃	SW ₁	SW ₂	kg	Order Number	Stock
SK 40	135	50	71	29	20	42	46	69	5	4	2.5	AND65 40A 20 135	○
SK 40	180	111	-	34	32	62	-	88	6	6	3.8	AND65 40A 32 180	○
SK 50	160	70	92	34	20	42	46	69	5	4	5	AND65 50A 20 160	○
SK 50	180	111	-	34	32	62	-	88	6	6	6.4	AND65 50A 32 180	○



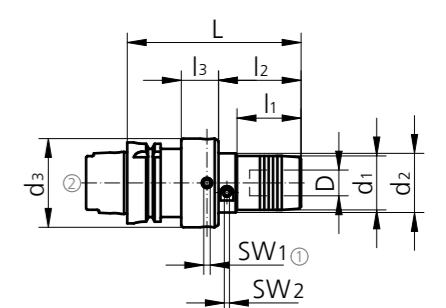
MAS-BT JIS 6339-AD

Size	L	l ₁	l ₂	l ₃	D	d ₁	d ₂	d ₃	SW ₁	SW ₂	kg	Order Number	Stock
BT 40	135	50	71	29	20	42	46	69	5	4	2.5	ANT65 40A 20 135	○
BT 40	180	111	-	34	32	62	-	88	6	6	3.9	ANT65 40A 32 180	○
BT 50	135	50	73	24	20	42	46	69	5	4	4.8	ANT65 50A 20 135	○
BT 50	180	116	-	26	32	62	-	88	6	6	6.5	ANT65 50A 32 180	○



DIN 69893-HSK-A

Size	L	l ₁	l ₂	l ₃	D	d ₁	d ₂	d ₃	SW ₁	SW ₂	kg	Order Number	Stock
HSK 63	135	50	64	29	20	42	46	69	5	4	2.2	ANH65 63A 20 135	○
HSK 63	180	104	-	34	32	62	-	88	6	6	4.2	ANH65 63A 32 180	○
HSK 100	135	50	82	24	20	42	46	69	5	4	3.4	ANH65 100A 20 135	○
HSK 100	165	110	-	26	32	62	-	88	6	6	4.9	ANH65 100A 32 165	○



Toimitus sisältää vesiputken

Scope of delivery: Coolant tube included

Varaosat

Spare Parts

D	Order Number	Stock
12	C00 03 44	●
20	C00 03 44	●
32	C00 03 45	●

Vesiputki

Coolant Tube

Size	Order Number	Stock
63	H00 63 01	○
100	H00 100 01	○

● Varastossa
On stock

▲ Lyhyellä toimitusajalla
Short-term availability

○ Saatavilla tilauksesta
Availability on request

Kaikki mitat metrisinä
All dimensions in mm

Ø 11.900 – 35.600 mm

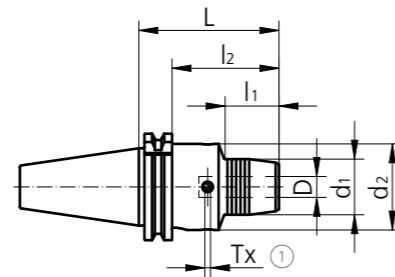


Schunk "Tendo Zero" kompensatiopidin

Schunk "Tendo Zero" Compensation Hydro Chuck

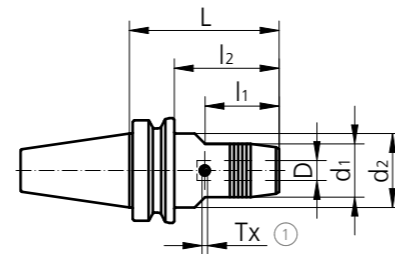
DIN 69871-AD/B

Size	L	l ₁	l ₂	D	d ₁	d ₂	Tx	kg	Schunk Order Number	Stock
SK 40	81	34	62	20	42	50	T15	1.4	204266 Z	▲
SK 40	81	26	62	32	63	80	T15	2	204267 Z	▲
SK 50	81	34	62	20	42	50	T15	3.3	204246 Z	▲
SK 50	104	63	84	32	64	70	T15	4.4	204247 Z	○



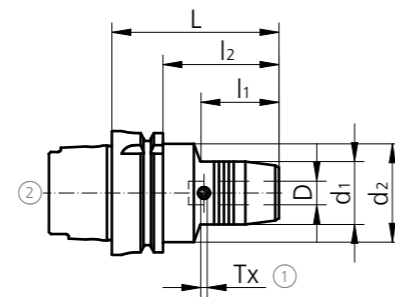
MAS-BT JIS 6339-AD/B

Size	L	l ₁	l ₂	D	d ₁	d ₂	Tx	kg	Schunk Order Number	Stock
BT 30	90	48	63	20	42	45	T15	1.5	205636 Z	▲
BT 40	90	48	63	20	42	45	T15	1.5	204445 Z	▲
BT 50	90	34	52	20	42	45	T15	4	204457 Z	▲
BT 50	120	63	82	32	64	70	T15	5.3	204458 Z	▲



DIN 69893-HSK-A

Size	L	l ₁	l ₂	D	d ₁	d ₂	Tx	kg	Schunk Order Number	Stock
HSK 63	90	48	64	20	42	50	T15	1.3	204056 Z*	▲
HSK 63	120	59	94	25	57	63	T15	2.2	204057 Z*	▲
HSK 63	125	63	99	32	64	75	T15	2.7	204058 Z*	▲
HSK 100	105	59	76	20	42	50	T15	2.8	204066 Z*	▲
HSK 100	110	62	81	25	57	63	T15	2.8	204067 Z*	▲
HSK 100	110	62	81	32	64	75	T15	3.8	204068 Z*	▲



* Vesiputki ei sisälly hintaan.

* Coolant tube is not included.

Holkit sivulla 59.

Lisätietoja www.schunk.com

Reducers are on page 59.

For further dimensions see www.schunk.com

Varaosat

Spare Parts

Size	①
63	9954676

Vesiputki

Coolant Tube

Size	②
63	H00 63 01
100	H00 100 01

● Varastossa
On stock

▲ Lyhyellä toimitusajalla
Short-term availability

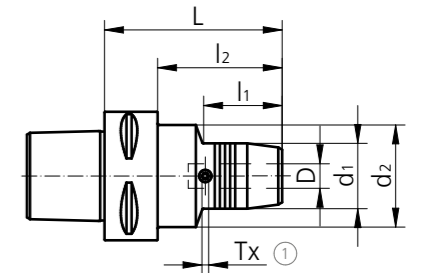
○ Saatavilla tilauksesta
Availability on request

● Kaikki mitat metrisinä
All dimensions in mm

Ø 11.900 – 35.600 mm

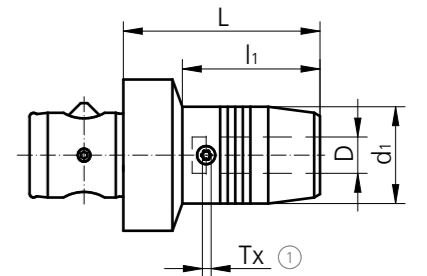
DIN 26623-1-PSC

Size	L	l ₁	l ₂	D	d ₁	d ₂	Tx	kg	Schunk Order Number	Stock
PSC 50	90	52	-	20	42	50	T15	1.05	201846 Z	▲
PSC 63	97	55	-	20	42	63	T15	1.6	201856 Z	▲
PSC 63	110	62	-	32	63	63	T15	2.8	201858 Z	▲



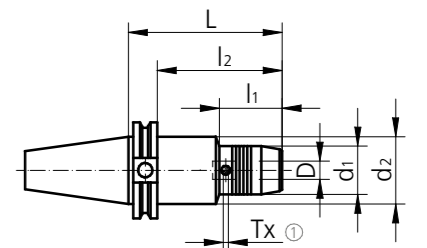
ABS-H

Size	L	l ₁	D	d ₁	Tx	kg	Schunk Order Number	Stock
ABS 50	75	58	20	42	T15	0.9	204576 Z	▲



ASME B5.50-CAT-AD/B

Size	L	l ₁	l ₂	D	d ₁	d ₂	Tx	kg	Schunk Order Number	Stock
CAT 40	102	50	83	20	38	45	T15	2	203666 Z	○
CAT 50	102	50	83	20	42	70	T15	2.8	204666 Z	○
CAT 50	102	65	83	32	64	70	T15	4.1	204668 Z	○



Holkit sivulla 59.

Lisätietoja www.schunk.com

Reducers are on page 59.

For further dimensions see www.schunk.com

Varaosat

Spare Parts

Size	①
63	9954676

● Varastossa
On stock

▲ Lyhyellä toimitusajalla
Short-term availability

○ Saatavilla tilauksesta
Availability on request

● Kaikki mitat metrisinä
All dimensions in mm

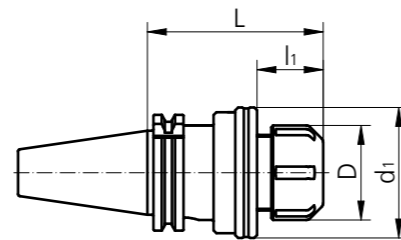
Ø 11.900 – 35.600 mm



Uiva-istukka
Floating Chuck

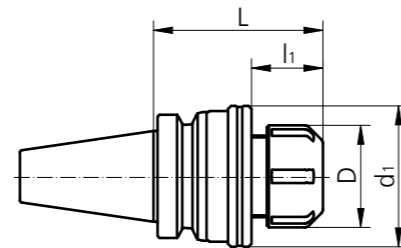
DIN 69871-AD

Size	Type	Ø-Range	L	l ₁	D	d ₁	OZ	kg	Order Number	Stock
SK 40	ER25	3.0 - 16.0	88	26	42	57	± 1	-	PD60 40A 25 088	○
SK 40	ER32	3.0 - 20.0	93	27	50	69	± 1	-	PD60 40A 32 093	○
SK 40	ER40	3.0 - 26.0	99	33	63	79	± 1	-	PD60 40A 40 099	○
SK 50	ER25	3.0 - 16.0	88	26	42	57	± 1	-	PD60 50A 25 088	○
SK 50	ER32	2.0 - 20.0	93	27	50	69	± 1	-	PD60 50A 32 093	○
SK 50	ER40	3.0 - 26.0	99	33	63	79	± 1	-	PD60 50A 40 099	○



MAS-BT JIS 6339-AD

Size	Type	Ø-Range	L	l ₁	D	d ₁	OZ	kg	Order Number	Stock
BT 30	ER20	3.0 - 13.0	70	-	35	-	± 1	-	PT60 30A 20 070	○
BT 40	ER25	3.0 - 16.0	78	26	42	57	± 1	-	PT60 40A 25 078	○
BT 40	ER32	3.0 - 20.0	83	27	50	69	± 1	-	PT60 40A 32 083	○
BT 40	ER40	3.0 - 30.0	89	33	63	79	± 1	-	PT60 40A 40 089	○
BT 50	ER25	3.0 - 16.0	88	26	42	57	± 1	-	PT60 50A 25 088	○
BT 50	ER32	3.0 - 20.0	93	27	50	69	± 1	-	PT60 50A 32 093	○
BT 50	ER40	3.0 - 26.0	99	33	63	79	± 1	-	PT60 50A 40 099	○



Toimitus sisältää tiivistemallisen mutterin

Scope of delivery: Collet nosepiece for seal disk included

Holkit ja tiivisterenkaat sivu 59

Collets and seal disc page 59

OZ Joustomatka

Floating range

● Varastossa
On stock

▲ Lyhyellä toimitusajalla
Short-term availability

○ Saatavilla tilauksesta
Availability on request

Kaikki mitat metrisinä
All dimensions in mm

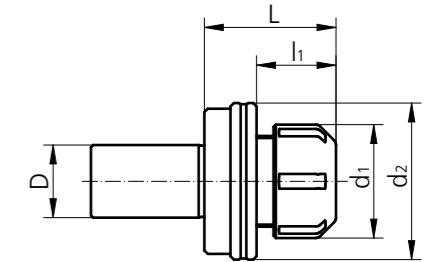
Ø 11.900 – 35.600 mm



Uiva-istukka sorveille
Floating Chuck for Lathes

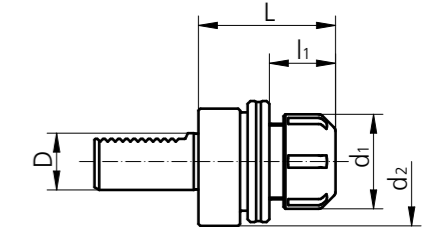
Cylindrical shaft DIN 1835-A

Adaptors	Type	Ø-Range	L	l ₁	D	d ₁	d ₂	OZ	kg	Order Number	Stock
ZS 20	ER25	3.0 - 16.0	53	26	20	42	57	± 1	0.6	PZ60 25 20 053	●
ZS 25	ER32	3.0 - 20.0	58	27	25	50	69	± 1.5	1.0	PZ60 32 25 058	●
ZS 25	ER40	3.0 - 26.0	64	33	25	63	79	± 1.5	1.4	PZ60 40 25 064	●
ZS 32	ER32	3.0 - 20.0	58	27	32	50	69	± 1.5	1.1	PZ60 32 32 058	●
ZS 32	ER40	3.0 - 26.0	64	33	32	63	79	± 1.5	1.5	PZ60 40 32 064	●



DIN 69880-VDI

Adaptors	Type	Ø-Range	L	l ₁	D	d ₁	d ₂	OZ	kg	Order Number	Stock
VDI 20	ER25	3.0 - 16.0	57	26	20	42	57	± 1	-	PV60 25 20 057	▲
VDI 30	ER25	3.0 - 16.0	64	26	30	42	68	± 1	-	PV60 25 30 064	▲
VDI 30	ER32	3.0 - 20.0	72	27	30	50	68	± 1.5	-	PV60 32 30 072	▲
VDI 40	ER32	3.0 - 20.0	74	27	40	50	83	± 1.5	1.9	PV60 32 40 074	▲
VDI 40	ER40	3.0 - 26.0	74	33	40	63	83	± 1.5	-	PV60 40 40 074	▲



Toimitus sisältää tiivistemallisen mutterin

Scope of delivery: Collet nosepiece for seal disk included

Muita kokoja pyynnöstä

Other dimensions on request

Holkit ja tiivisterenkaat sivu 59

Collets and seal disc page 59

ZS Sylinterimalli

Cylindrical shank

OZ Joustomatka

Floating range

● Varastossa
On stock

▲ Lyhyellä toimitusajalla
Short-term availability

○ Saatavilla tilauksesta
Availability on request

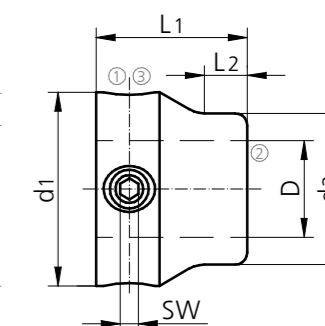
Kaikki mitat metrisinä
All dimensions in mm



Säätöholkki

Compensation Sleeve

System Size	L1	L2	D	d1	d2	SW	Order Number	Stock
RX 016	20	5	10	26	20	3	MH16 10 26 020	●
RX 019	20	5	12	28	22	3	MH19 12 28 020	●
RX 024	25	7	16	32	25	3	MH24 16 32 025	●
RX 029	32	10	20	40	32	4	MH29 20 40 032	●
RX 036	35	13	25	45	38	4	MH36 25 45 035	●



Ei soveltu käytettäväksi kovametallipitimiin kanssa
Not applicable for carbide insert holders

Varaosat

Spare Parts

System Size	①	②	③
RX 016	C00 96 29	D00 05 03	G00 02 04
RX 019	C00 96 29	D00 05 04	G00 02 04
RX 024	C00 96 29	D00 05 02	G00 02 04
RX 029	C00 96 31	D00 05 05	G00 02 05
RX 036	C00 96 31	D00 05 06	G00 02 05

● Varastossa
On stock

▲ Lyhyellä toimitusajalla
Short-term availability

○ Saatavilla tilauksesta
Availability on request

Kaikki mitat metrisinä
All dimensions in mm

Ø 35.601 – 140.600 mm



Teräpalapitimet

Insert Holders



System Size	Ø-Range	L	D	d	kg	Order Number "G"	Order Number "B"	Stock
RX 044	35.601 - 43.600	30	32	18	0.3	RXKG44 32 18 030	RXKB44 32 18 030	●
RX 052	43.601 - 51.600	35	39	20	0.45	RXKG52 39 20 035	RXKB52 39 20 035	●
RX 061	51.601 - 60.600	40	46	25	0.7	RXKG61 46 25 040	RXKB61 46 25 040	●
RX 081	60.601 - 80.600	50	56	32	1.25	RXKG81 56 32 050	RXKB81 56 32 050	●
RX 101	80.601 - 100.600	60	76	40	2.6	RXKG101 76 40 060	RXKB101 76 40 060	●
RX 121	100.601 - 120.600	60	76	40	3.25	RXKG121 76 40 060	RXKB121 76 40 060	●
RX 141	120.601 - 140.600	60	76	40	3.9	RXKG141 76 40 060	RXKB141 76 40 060	●

HUOM: käytä 35 tyypin ruuvia versiossa RXKG ja 38 tyypin ruuvia versiossa RXKB
Attention: Use the screw type 35 for the version RXKG, 38 for the version RXKB

Toimitukseen sisältyy 1 setti vararuuveja, 1 Torx®-avain (suositellaan käytettävä momentti Torx®-avainta katso sivu 62)

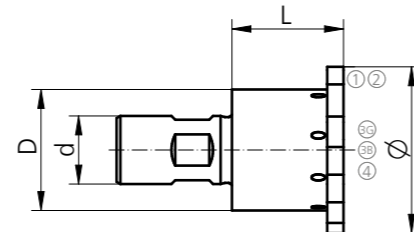
Scope of delivery: 1 Set of replacement screws and 1 Torx® screw driver (torque screw driver is recommended, page 62)

Kokoonpano ja käyttöohjeet teknisessä katalogissa

See "URMA Reaming Technology Guide" for details on assembly and handling

RXKG = Läpireikä
RXKB = Pohjareikä

RXKG = for through bores
RXKB = for blind holes



Varaosat

Spare Parts

System Size	①	②	35	38	④
RX 044	C00 90 02 (4x)	G00 20 02	C00 26 23	C00 26 23B	G00 02 07
RX 052	C00 90 02 (5x)	G00 20 02	C00 26 38	C00 26 38B	G00 02 07
RX 061	C00 90 02 (5x)	G00 20 02	C00 24 26	C00 24 26B	G00 02 08
RX 081	C00 90 04 (4x)	G00 20 03	C00 26 37	C00 26 37B	G00 02 09
RX 101	C00 90 04 (4x)	G00 20 03	C00 24 31	C00 24 31B	G00 02 16
RX 121	C00 90 04 (8x)	G00 20 03	C00 24 31	C00 24 31B	G00 02 16
RX 141	C00 90 04 (8x)	G00 20 03	C00 24 31	C00 24 31B	G00 02 16

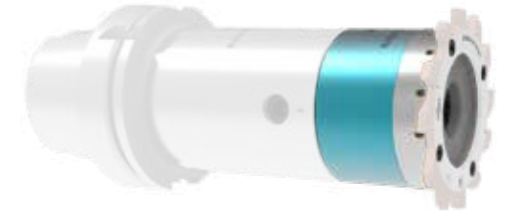
● Varastossa
On stock

▲ Lyhyellä toimitusajalla
Short-term availability

○ Saatavilla tilauksesta
Availability on request

Kaikki mitat metrisinä
All dimensions in mm

Ø 60.601 – 140.600 mm



Teräpalapidin (kevyt malli)

Insert Holders (Lightweight)



System Size	Ø-Range	L	D	d	kg	Order Number "G"	Order Number "B"	Stock
RX 081	60.601 - 80.600	50	56	32	0.9	RXKGL81 56 32 050	RXKBL81 56 32 050	●
RX 101	80.601 - 100.600	60	76	40	1.8	RXKGL101 76 40 060	RXKBL101 76 40 060	●
RX 121	100.601 - 120.600	60	76	40	2.3	RXKGL121 76 40 060	RXKBL121 76 40 060	●
RX 141	120.601 - 140.600	60	76	40	2.8	RXKGL141 76 40 060	RXKBL141 76 40 060	●

HUOM: käytä 35 tyypin ruuvia versiossa RXKGL ja 38 tyypin ruuvia versiossa RXKBL
Attention: Use the screw type 35 for the version RXKGL, 38 for the version RXKBL

Toimitukseen sisältyy 1 setti vararuuveja, 1 Torx®-avain (suositellaan käytettävä momentti Torx®-avainta katso sivu 62)

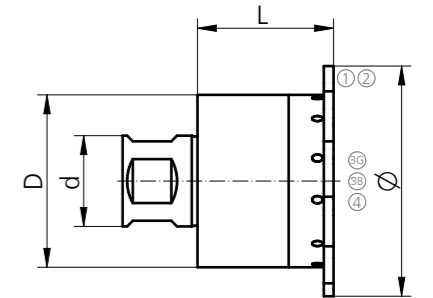
Scope of delivery: 1 Set of replacement screws and 1 Torx® screw driver (torque screw driver is recommended, page 62)

Kokoonpano ja käyttöohjeet teknisessä katalogissa

See "URMA Reaming Technology Guide" for details on assembly and handling

RXKGL = Läpireikä
RXKBL = Pohjareikä

RXKGL = for through bores
RXKBL = for blind holes



Varaosat

Spare Parts

System Size	①	②	35	38	④
RX 044	C00 90 02 (4x)	G00 20 02	C00 26 23	C00 26 23B	G00 02 07
RX 052	C00 90 02 (5x)	G00 20 02	C00 26 38	C00 26 38B	G00 02 07
RX 061	C00 90 02 (5x)	G00 20 02	C00 24 26	C00 24 26B	G00 02 08
RX 081	C00 90 04 (4x)	G00 20 03	C00 26 37	C00 26 37B	G00 02 09
RX 101	C00 90 04 (4x)	G00 20 03	C00 24 31	C00 24 31B	G00 02 16
RX 121 /141	C00 90 04 (8x)	G00 20 03	C00 24 31	C00 24 31B	G00 02 16

● Varastossa
On stock

▲ Lyhyellä toimitusajalla
Short-term availability

○ Saatavilla tilauksesta
Availability on request

Kaikki mitat metrisinä
All dimensions in mm

Ø 35.601 – 140.600 mm

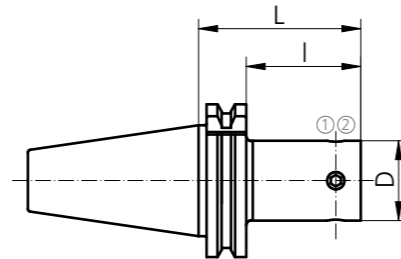


Adapterit (integroidulla kompensaatiovälineellä)

Adaptors (with Integrated Compensation Device)

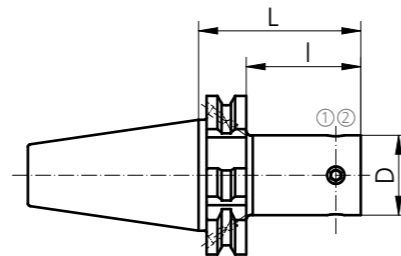
DIN 69871-AD

System Size	Size	L	I	D	kg	Order Number	Stock
RX 044	SK 40	65	46	32	1.1	RXAD10 40A 44 065	●
RX 052	SK 40	65	46	39	1.2	RXAD10 40A 52 065	●
RX 061	SK 40	75	56	46	1.4	RXAD10 40A 61 075	●
RX 081	SK 40	80	61	56	1.6	RXAD10 40A 81 080	●
RX 101 - RX 141	SK 40	95	76	76	2.2	RXAD10 40A 101 095	●
RX 044	SK 50	65	46	32	2.9	RXAD10 50A 44 065	●
RX 052	SK 50	65	46	39	3	RXAD10 50A 52 065	●
RX 061	SK 50	75	56	46	3.2	RXAD10 50A 61 075	●
RX 081	SK 50	85	66	56	3.6	RXAD10 50A 81 085	●
RX 101 - RX 141	SK 50	95	76	76	4.6	RXAD10 50A 101 095	●



DIN 69871-B

System Size	Size	L	I	D	kg	Order Number	Stock
RX 044	SK 40	65	46	32	1.1	RXAD10 40B 44 065	●
RX 052	SK 40	65	46	39	1.2	RXAD10 40B 52 065	●
RX 061	SK 40	75	56	46	1.4	RXAD10 40B 61 075	●
RX 081	SK 40	80	61	56	1.6	RXAD10 40B 81 080	●
RX 101 - RX 141	SK 40	95	76	76	2.2	RXAD10 40B 101 095	●
RX 044	SK 50	65	46	32	2.9	RXAD10 50B 44 065	●
RX 052	SK 50	65	46	39	3	RXAD10 50B 52 065	●
RX 061	SK 50	75	56	46	3.2	RXAD10 50B 61 075	●
RX 081	SK 50	85	66	56	3.6	RXAD10 50B 81 085	●
RX 101 - RX 141	SK 50	95	76	76	4.6	RXAD10 50B 101 095	●



Varaosat Spare Parts

System Size	①	②
RX 044	C00 90 08 (4x)	G00 02 05
RX 052	C00 90 10 (4x)	G00 02 06
RX 061	C00 90 10 (4x)	G00 02 06
RX 081	C00 90 12 (4x)	G00 02 07
RX 101 - RX 141	C00 90 16 (4x)	G00 02 08

Ø 35.601 – 140.600 mm

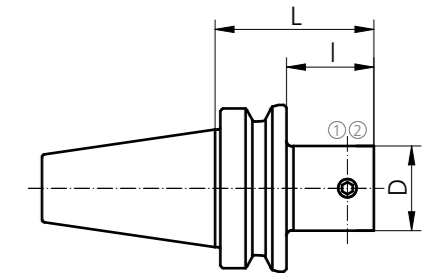


Adapterit (integroidulla kompensaatiovälineellä)

Adaptors (with Integrated Compensation Device)

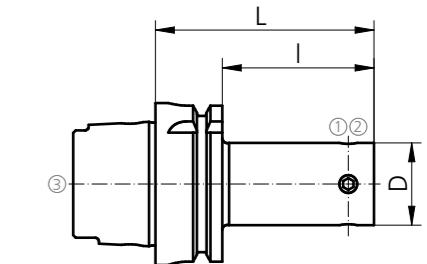
MAS-BT JIS 6339-AD

System Size	Size	L	I	D	kg	Order Number	Stock
RX 044	BT 40	60	33	32	1.1	RXAT10 40A 44 060	●
RX 052	BT 40	65	38	39	1.3	RXAT10 40A 52 065	●
RX 061	BT 40	70	43	46	1.4	RXAT10 40A 61 070	●
RX 081	BT 40	80	53	56	1.7	RXAT10 40A 81 080	●
RX 101 - RX 141	BT 40	95	-	76	2.5	RXAT10 40A 101 095	●
RX 044	BT 50	65	27	32	3.7	RXAT10 50A 44 065	●
RX 052	BT 50	65	27	39	3.8	RXAT10 50A 52 065	●
RX 061	BT 50	75	37	46	4	RXAT10 50A 61 075	●
RX 081	BT 50	85	47	56	4.3	RXAT10 50A 81 085	●
RX 101 - RX 141	BT 50	95	57	76	5.1	RXAT10 50A 101 095	●



DIN 69893-HSK-A

System Size	Size	L	I	D	kg	Order Number	Stock
RX 044	HSK 63	85	59	32	1	RXAH10 63A 44 085*	●
RX 052	HSK 63	90	64	39	1.2	RXAH10 63A 52 090*	●
RX 061	HSK 63	100	74	46	1.5	RXAH10 63A 61 100*	●
RX 081	HSK 63	105	79	56	1.8	RXAH10 63A 81 105*	●
RX 101 - RX 141	HSK 63	120	94	76	2.4	RXAH10 63A 101 120*	●
RX 044	HSK 100	90	61	32	2.3	RXAH10 100A 44 090*	●
RX 052	HSK 100	95	66	39	2.6	RXAH10 100A 52 095*	●
RX 061	HSK 100	100	71	46	2.8	RXAH10 100A 61 100*	●
RX 081	HSK 100	120	91	56	3.5	RXAH10 100A 81 120*	●
RX 101 - RX 141	HSK 100	130	101	76	5	RXAH10 100A 101 130*	●



* Vesiputki ei sisälly toimitukseen

* Coolant tube is not included

Varaosat Spare Parts

System Size	①	②
RX 044	C00 90 08 (4x)	G00 02 05
RX 052	C00 90 10 (4x)	G00 02 06
RX 061	C00 90 10 (4x)	G00 02 06
RX 081	C00 90 12 (4x)	G00 02 07
RX 101 - RX 141	C00 90 16 (4x)	G00 02 08

Vesiputki Coolant Tube

Size	③
63	H00 63 01
100	H00 100 01

Ø 35.601 – 140.600 mm



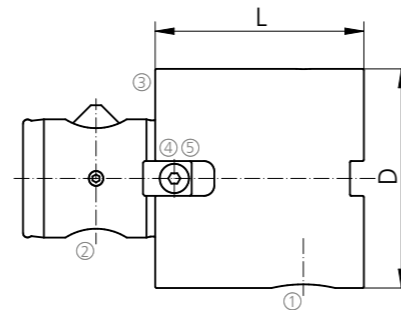
Jatkovarret Beta-Modul

Extensions Beta-Module

Jatkovarret Beta-Beta

Extensions Beta-Beta

Beta	L	D	MCM	MCC	kg	Order Number	Stock
32	35	32	B32	B32	0.2	B13 32 32 035	●
32	70	32	B32	B32	0.4	B13 32 32 070	●
40	45	42	B40	B40	0.4	B13 40 40 045	●
40	70	42	B40	B40	0.7	B13 40 40 070	●
50	65	50	B50	B50	1.0	B13 50 50 065	●
50	100	50	B50	B50	1.5	B13 50 50 100	●
63	60	63	B63	B63	1.3	B13 63 63 060	●
63	125	63	B63	B63	2.9	B13 63 63 125	●
80	80	80	B80	B80	2.9	B13 80 80 080	●
80	160	80	B80	B80	6	B13 80 80 160	●
100	80	100	B100	B100	4.9	B13 100 100 080	●
100	180	100	B100	B100	10.9	B13 100 100 180	●



MCM / MCC = "Match Code" Katso tiedot sivu 50

MCM / MCC = "Match Code" Description see page 50

Varaosat

Spare Parts

Beta	①	②	③	④	⑤
25	Z00 25 24	Z00 25 21	Z00 25 23		
32	Z00 32 24	Z00 32 21	Z00 32 23		
40	Z00 40 24	Z00 40 21	Z00 40 23	Z00 40 25	C00 22 58
50	Z00 50 24	Z00 50 21	Z00 50 23	Z00 50 25	C00 22 60
63	Z00 63 24	Z00 63 21	Z00 63 23	Z00 63 25	C00 22 05
80	Z00 80 24	Z00 80 21	Z00 80 23	Z00 80 25	C00 22 07
100	Z00 100 24	Z00 100 21	Z00 100 23	Z00 100 25	C00 22 71

● Varastossa
On stock

▲ Lyhyellä toimitusajalla
Short-term availability

○ Saatavilla tilauksesta
Availability on request

● Kaikki mitat metrisinä
All dimensions in mm

Ø 35.601 – 140.600 mm



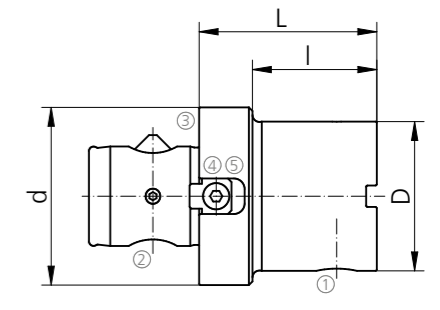
Muunnoskappaleet Beta-Modul

Reducers Beta-Module

Muunnoskappale Beta-Beta

Reducers Beta-Beta

Beta 1	Beta 2	L	I	D	d	MCM	MCC	kg	Order Number	Stock
40	32	45	30	32	42	B40	B32	0.3	B12 40 32 045	●
50	40	50	35	42	50	B50	B40	0.5	B12 50 40 050	●
63	32	50	30	32	63	B63	B32	0.9	B12 63 32 050	●
63	40	55	35	42	63	B63	B40	1.1	B12 63 40 055	●
63	50	60	40	50	63	B63	B50	1.1	B12 63 50 060	●
80	40	60	35	42	80	B80	B40	2.2	B12 80 40 060	●
80	63	60	35	63	80	B80	B63	2.4	B12 80 63 060	●
100	63	60	35	63	100	B100	B63	3.3	B12 100 63 060	●
100	80	75	50	80	100	B100	B80	3.5	B12 100 80 075	●



MCM / MCC = "Match Code" Katso tiedot sivu 50

MCM / MCC = "Match Code" Description see page 50

Varaosat

Spare Parts

Beta	①	②	③	④	⑤
25	Z00 25 24	Z00 25 21	Z00 25 23		
32	Z00 32 24	Z00 32 21	Z00 32 23		
40	Z00 40 24	Z00 40 21	Z00 40 23	Z00 40 25	C00 22 58
50	Z00 50 24	Z00 50 21	Z00 50 23	Z00 50 25	C00 22 60
63	Z00 63 24	Z00 63 21	Z00 63 23	Z00 63 25	C00 22 05
80	Z00 80 24	Z00 80 21	Z00 80 23	Z00 80 25	C00 22 07
100	Z00 100 24	Z00 100 21	Z00 100 23	Z00 100 25	C00 22 71

● Varastossa
On stock

▲ Lyhyellä toimitusajalla
Short-term availability

○ Saatavilla tilauksesta
Availability on request

● Kaikki mitat metrisinä
All dimensions in mm

Ø 35.601 – 140.600 mm

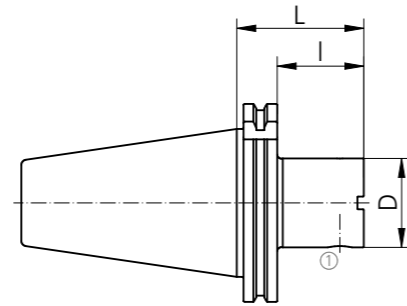


Pitimet Beta-Modul

System Holders Beta-Module

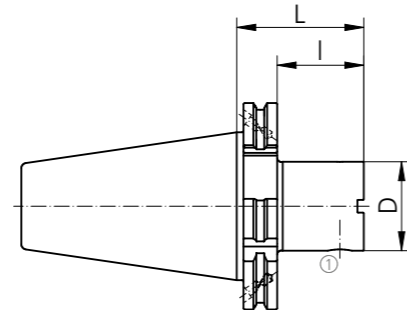
DIN 69871-AD

Size	Beta	L	I	D	MCC	kg	Order Number	Stock
SK 40	32	50	31	32	B32	0.9	BD10 40A 32 050	●
SK 40	40	35	16	42	B40	0.9	BD10 40A 40 035	●
SK 40	40	50	31	42	B40	1.1	BD10 40A 40 050	●
SK 40	50	50	31	50	B50	1.2	BD10 40A 50 050	●
SK 40	63	65	46	63	B63	1.5	BD10 40A 63 065	●
SK 50	32	60	41	32	B32	2.9	BD10 50A 32 060	●
SK 50	40	60	41	42	B40	3.0	BD10 50A 40 060	●
SK 50	50	60	41	50	B50	3.2	BD10 50A 50 060	●
SK 50	63	60	41	63	B63	3.3	BD10 50A 63 060	●
SK 50	80	70	51	80	B80	4.0	BD10 50A 80 070	●
SK 50	100	115	96	100	B100	6.9	BD10 50A 100 115	●



DIN 69871-B

Size	Beta	L	I	D	MCC	kg	Order Number	Stock
SK 40	40	35	16	42	B40	0.9	BD10 40B 40 035	●
SK 40	63	65	46	63	B63	1.5	BD10 40B 63 065	●
SK 50	32	60	41	32	B32	2.9	BD10 50B 32 060	●
SK 50	40	60	41	42	B40	3.0	BD10 50B 40 060	●
SK 50	50	60	41	50	B50	3.2	BD10 50B 50 060	●
SK 50	63	60	41	63	B63	3.3	BD10 50B 63 060	●
SK 50	100	115	96	100	B100	6.9	BD10 50B 100 115	●



MCM / MCC = "Match Code" Katso tiedot sivu 50

MCM / MCC = "Match Code" Description see page 50

Varaosat

Spare Parts

Beta	①
32	Z00 32 24
40	Z00 40 24
50	Z00 50 24
63	Z00 63 24
80	Z00 80 24
100	Z00 100 24

● Varastossa
On stock

▲ Lyhyellä toimitusajalla
Short-term availability

○ Saatavilla tilauksesta
Availability on request

Kaikki mitat metrisinä
All dimensions in mm

Ø 35.601 – 140.600 mm

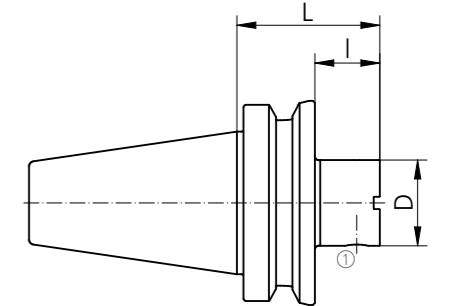


Pitimet Beta-Modul

System Holders Beta-Module

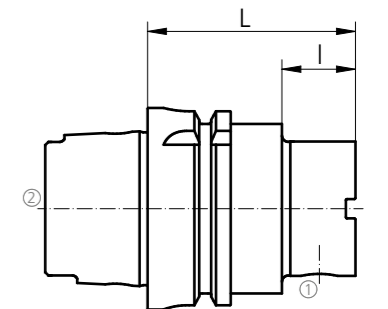
MAS-BT JIS 6339-AD

Size	Beta	L	I	D	MCC	kg	Order Number	Stock
BT 40	32	60	33	32	B32	0.9	BT10 40A 32 060	●
BT 40	40	28	1	42	B40	0.9	BT10 40A 40 028	●
BT 40	40	60	33	42	B40	1.2	BT10 40A 40 060	●
BT 40	50	60	33	50	B50	1.3	BT10 40A 50 060	●
BT 40	63	55	28	63	B63	1.4	BT10 40A 63 055	●
BT 50	32	70	32	32	B32	3.7	BT10 50A 32 070	●
BT 50	40	70	32	42	B40	3.9	BT10 50A 40 070	●
BT 50	50	70	32	50	B50	4.1	BT10 50A 50 070	●
BT 50	63	80	42	63	B63	4.3	BT10 50A 63 080	●
BT 50	80	100	62	80	B80	5.5	BT10 50A 80 100	●
BT 50	100	110	72	100	B100	7.0	BT10 50A 100 110	●



DIN 69893-HSK-A

Size	Beta	L	I	D	MCC	kg	Order Number	Stock
HSK 50	40	65	39	42	B32	0.9	BH10 50A 40 065*	○
HSK 63	32	60	34	32	B40	0.9	BH10 63A 32 060*	●
HSK 63	40	65	23	42	B40	1.2	BH10 63A 40 065*	●
HSK 63	50	70	44	50	B50	1.3	BH10 63A 50 070*	●
HSK 63	63	80	38	63	B63	1.4	BH10 63A 63 080*	●
HSK 100	32	60	31	32	B32	3.7	BH10 100A 32 060*	●
HSK 100	40	80	35	42	B40	3.9	BH10 100A 40 080*	●
HSK 100	50	80	35	50	B50	4.1	BH10 100A 50 080*	●
HSK 100	63	80	35	63	B63	4.3	BH10 100A 63 080*	●
HSK 100	80	90	45	80	B80	5.5	BH10 100A 80 090*	●
HSK 100	100	100	55	100	B100	7.0	BH10 100A 100 100*	●



* Vesiputki ei sisälly toimitukseen

* Coolant tube is not included

Varaosat

Spare Parts

Beta	①
32	Z00 32 24
40	Z00 40 24
50	Z00 50 24
63	Z00 63 24
80	Z00 80 24
100	Z00 100 24

Vesiputki

Coolant Tube

Size	②
50	H00 50 01
63	H00 63 01
100	H00 100 01

Ø 35.601 – 140.600 mm

Pitimet Beta-Modul

System Holders Beta-Module

DIN 26623-1-PSC

Size	Beta	L	I	D	MCC	kg	Order Number	Stock
PSC 63	40	55	30	42	B40	1.0	BC10 63 40 055	●
PSC 63	50	60	35	50	B50	1.2	BC10 63 50 060	●
PSC 63	63	65	40	63	B63	1.5	BC10 63 63 065	●

MCM / MCC = "Match Code" Katso tiedot sivu 50

MCM / MCC = "Match Code" Description see page 50

ASME B5.50-CAT-AD

Size	Beta	L	I	D	MCC	kg	Order Number	Stock
CAT 40	25	60	25	25	B25	0.8	C4U4-B025	○
CAT 40	32	60	25	32	B32	0.9	C4U4-B032	○
CAT 40	40	60	25	42	B40	0.9	C4U4-B040	○
CAT 40	50	60	41	50	B50	1.2	C4U4-B050	○
CAT 40	63	65	46	63	B63	1.5	C4U4-B063	○
CAT 50	25	60	25	25	B25	2.8	C6U4-B025	○
CAT 50	32	60	25	32	B32	2.9	C6U4-B032	○
CAT 50	40	60	25	42	B40	3.0	C6U4-B040	○
CAT 50	50	60	25	50	B50	3.0	C6U4-B050	○
CAT 50	63	65	30	63	B63	3.0	C6U4-B063	○
CAT 50	80	75	40	80	B80	3.3	C6U4-B080	○
CAT 50	100	125	106	100	B100	4.5	C6U4-B100	○

Varaosat

Spare Parts

Beta	①
25	Z00 25 24
32	Z00 32 24
40	Z00 40 24
50	Z00 50 24
63	Z00 63 24
80	Z00 80 24
100	Z00 100 24

● Varastossa
On stock

▲ Lyhyellä toimitusajalla
Short-term availability

○ Saatavilla tilauksesta
Availability on request

Kaikki mitat metrisinä
All dimensions in mm

Erikoispitimen kartio

Module Holders

DIN 69871-AD/B

Size	L	D	SW	Order Number	Stock
SK 40	50	60	4	AD10 40AB 60 050	●
SK 40	55	80	4	AD10 40AB 80 055	●
SK 40	60	100	5	AD10 40AB 100 060	○
SK 50	50	80	4	AD10 50AB 80 050	●
SK 50	60	100	5	AD10 50AB 100 060	●
SK 50	60	117	5	AD10 50AB 117 060	●
SK 50	60	140	5	AD10 50AB 140 060	○

ASME B5.50-CAT-AD/B*

Size	L	D	SW	Order Number	Stock
CAT 40	50	60	4	AC10 40AB 60 050	●
CAT 40	55	80	4	AC10 40AB 80 055	●
CAT 40	60	100	5	AC10 40AB 100 060	○
CAT 50	50	80	4	AC10 50AB 80 050	●
CAT 50	60	100	5	AC10 50AB 100 060	●
CAT 50	60	117	5	AC10 50AB 117 060	●
CAT 50	60	140	5	AC10 50AB 140 060	○

* CAT = Metrinen vetopultinkierre sis. pultin

* CAT = metrical pull-stud thread incl. retention knob

Varaosat

Spare Parts

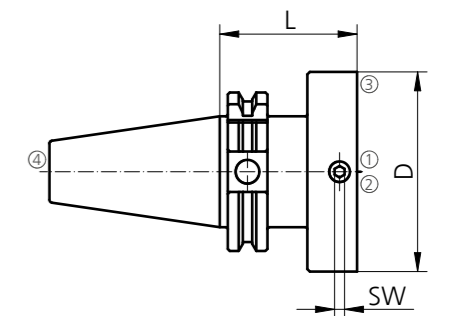
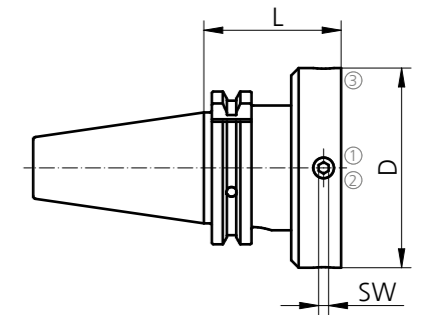
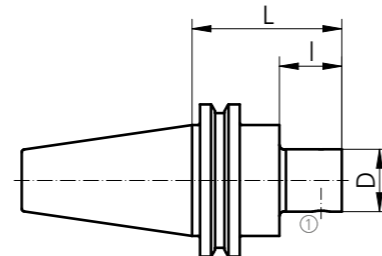
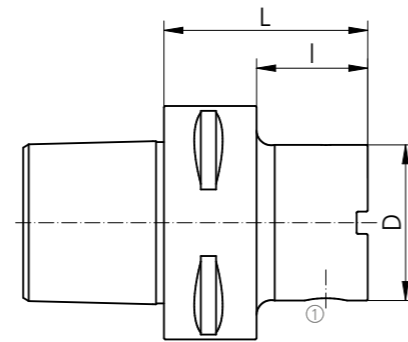
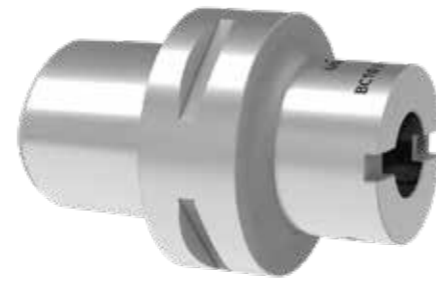
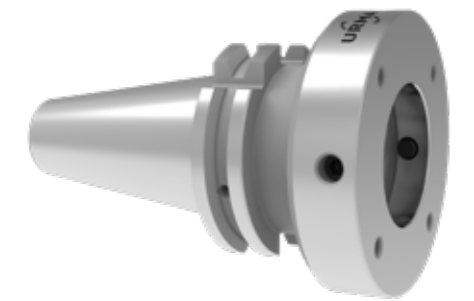
D	①	②
60	C00 03 37	G00 02 05
80	C00 03 37	G00 02 05
100	C00 03 28	G00 02 06
117	C00 03 28	G00 02 06
140	C00 03 28	G00 02 06

● Varastossa
On stock

▲ Lyhyellä toimitusajalla
Short-term availability

○ Saatavilla tilauksesta
Availability on request

Kaikki mitat metrisinä
All dimensions in mm



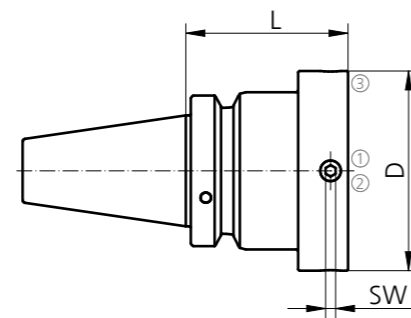
Erikoispitimen kartio

Module Holders



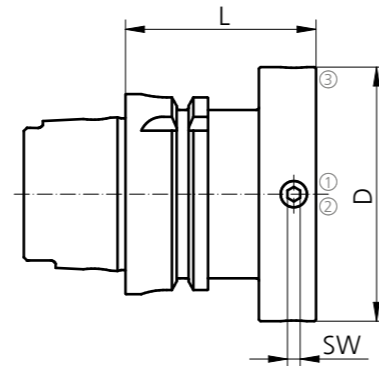
MAS-BT JIS 6339-AD/B

Size	L	D	SW	Order Number	Stock
BT 40	55	60	4	AT10 40AB 60 055	●
BT 40	65	80	4	AT10 40AB 80 065	●
BT 40	70	100	5	AT10 40AB 100 070	○
BT 50	70	80	4	AT10 50AB 80 070	●
BT 50	70	100	5	AT10 50AB 100 070	●
BT 50	80	117	5	AT10 50AB 117 080	●
BT 50	80	140	5	AT10 50AB 140 080	○



DIN 69893-HSK-A

Size	L	D	SW	Order Number	Stock
HSK 63	60	60	4	AH10 63A 60 060*	●
HSK 63	60	80	4	AH10 63A 80 060*	●
HSK 63	65	100	5	AH10 63A 100 065*	●
HSK 100	55	80	4	AH10 100A 80 055*	●
HSK 100	65	100	5	AH10 100A 100 065*	●
HSK 100	65	117	5	AH10 100A 117 065*	●
HSK 100	75	140	5	AH10 100A 140 075*	○



* Vesiputki ei sisälly toimitukseen

* Coolant tube is not included

Varaosat
Spare Parts

D	①	②
60	C00 03 37	G00 02 05
80	C00 03 37	G00 02 05
100	C00 03 28	G00 02 06
117	C00 03 28	G00 02 06
140	C00 03 28	G00 02 06

Lisävarusteita
Accessories

D	③
60	C00 22 13
80	C00 22 02
100	C00 22 15
117	C00 22 15
140	C00 22 64

Vesiputki
Coolant Tube

Size	④
63	H00 63 01
100	H00 100 01

● Varastossa
On stock▲ Lyhyellä toimitusajalla
Short-term availability○ Saatavilla tilauksesta
Availability on requestKaikki mitat metrisinä
All dimensions in mm

Lisävarusteita

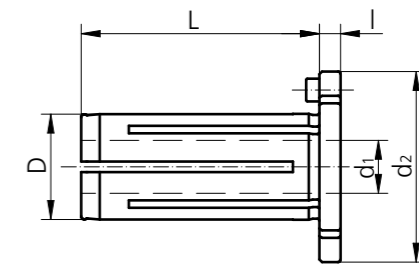
Accessories

Lisävarusteet pitimiin

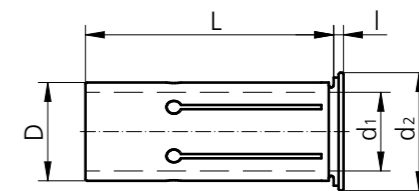
Accessories and Spare Parts for Compensation Holder

Holkit hydraulikompensaatiopitimiin
Reducers for Hydro-Compensation Chuck

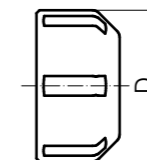
L	l	D	d ₁	d ₂	Order Number	Stock
49	4	12	10	26	67 12 10	●
49	4	20	10	36	67 20 10	●
49	4	20	12	36	67 20 12	●
49	4	20	16	36	67 20 16	●
69	4	32	20	51	67 32 20	●
69	4	32	25	51	67 32 25	●

Holkit "Schunk-hydraulikompensaatiopitimiin"
Reducers for Hydro-Compensation Chuck "Schunk"

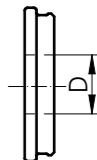
L	l	D	d ₁	d ₂	Order Number	Stock
50.5	2	20	10	24.0	0207927	●
50.5	2	20	12	24.0	0207929	●
50.5	2	20	16	24.0	0207933	●
60.5	3	32	20	35.5	0207947	●
60.5	3	32	25	35.5	0207948	●

ER mutteri tiivisterenkaalle
Collet Nut for Seal Disk

Type	D	Thread	Order Number	Stock
ER20	34	M25 x 1.5	20.107.310	●
ER25	42	M32 x 1.5	20.107.410	●
ER32	50	M40 x 1.5	20.107.510	●
ER40	63	M50 x 1.5	20.107.610	●

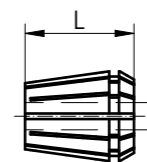
Tiivisterengas
Seal Disc for Collet Nut

Type	D	Order Number	Stock
ER20	3.0 - 13.0	20.107.31XXX	●
ER25	3.0 - 16.0	20.107.41XXX	●
ER32	3.0 - 20.0	20.107.51XXX	●
ER40	3.0 - 26.0	20.107.61XXX	●

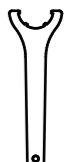
XXX = ø D Ø insert holders
Example: D = 12 = 20.107.41120ER-holkit
Collets

Type	D	L	Order Number	Stock
ER20	3.0 - 13.0	31.5	62 20 XX	●
ER25	3.0 - 16.0	35	62 25 XX	●
ER32	3.0 - 20.0	40	62 32 XX	●
ER40	3.0 - 26.0	46	62 40 XX	●

XX = ø D Example: D = 12 = 62 25 12

Haka-avaimet ER-holkeille
Key for Collet Nut

Type	Order Number	Stock
ER20	00 05 12	●
ER25	00 05 05	●
ER32	00 05 02	●
ER40	00 05 03	●



Lisävarusteita

Accessories



RX Erikoisratkaisut

RX Multifunctional Tool

Adapterit lisätyökaluille holkki-istukalla

Additional Tool Adapters with Collet Chuck

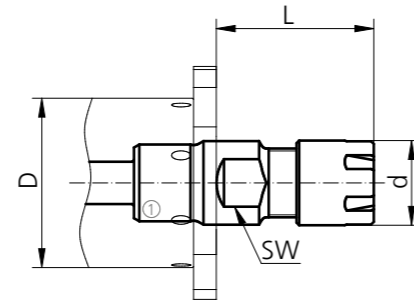
System Size	Type	Ø-Range	L	D	d	SW	Order Number	Stock
RX 044	ER11*	3.0 - 7.0	30	32	16	SW13	RXSZ44 11 030	○
RX 052	ER11*	3.0 - 7.0	30	32	16	SW13	RXSZ52 11 030	○
RX 061	ER16	3.0 - 10.0	42	46	28	SW22	RXSZ61 16 042	○
RX 081	ER20	3.0 - 13.0	45	56	34	SW27	RXSZ81 20 045	○
RX 101 - RX 141	ER32	3.0 - 20.0	55	76	50	SW41	RXSZ101 32 055	○

Sopii vain alla oleviin RXKG...SZ -pitimiin (muokkaukset mahdollisia)

* Holkki täytyy tilata erikseen (koko varren kiinnityshalkaisijaan verrannollinen)

Add-on works only with the RXKG...SZ below (rework possible)

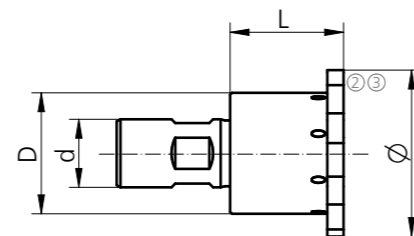
* Collet nut must be ordered separately (in relation to shank diameter)



Teräpalkanpitimet

Insert Holders

System Size	Ø-Range	L	D	d	kg	Order Number	Stock
RX 044	35.601 - 43.600	30	32	18	0.3	RXKG44 32 18 030SZ	○
RX 052	43.601 - 51.600	35	39	20	0.45	RXKG52 39 20 035SZ	○
RX 061	51.601 - 60.600	40	46	25	0.7	RXKG61 46 25 040SZ	○
RX 081	60.601 - 80.600	50	56	32	1.25	RXKG81 56 32 050SZ	○
RX 101	80.601 - 100.600	60	76	40	2.6	RXKG101 76 40 060SZ	○
RX 121	100.601 - 120.600	60	76	40	3.25	RXKG121 76 40 060SZ	○
RX 141	120.601 - 140.600	60	76	40	3.9	RXKG141 76 40 060SZ	○



Varaosat

Spare Parts

System Size	①	②	③
RX 044	Z00 90 09	C00 90 02 (4x)	G00 20 02
RX 052	Z00 90 09	C00 90 02 (5x)	G00 20 02
RX 061	Z00 90 09	C00 90 02 (5x)	G00 20 02
RX 081	Z00 90 09	C00 90 04 (4x)	G00 20 03
RX 101	Z00 90 09	C00 90 04 (4x)	G00 20 03
RX 121	Z00 90 09	C00 90 04 (8x)	G00 20 03
RX 141	Z00 90 09	C00 90 04 (8x)	G00 20 03

● Varastossa
On stock▲ Lyhyellä toimitusajalla
Short-term availability○ Saatavilla tilauksesta
Availability on requestKaikki mitat metrisinä
All dimensions in mm

Lisävarusteita

Accessories

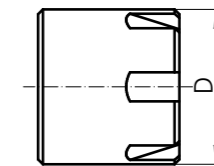
RX Erikoisratkaisut

RX Multifunctional Tool

ER11-mutteri Lämpijähdytysmalli (ERM11)

ER11 Collet Nut for Internal Coolant (ERM11)

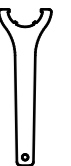
Nominal size	D	Seal Range	Order Number	Stock
ø 3	16	3.0 - 2.5	20.107.111	○
ø 3.5	16	3.5 - 3.0	20.107.112	○
ø 4	16	4.0 - 3.5	20.107.113	○
ø 4.5	16	4.5 - 4.0	20.107.114	○
ø 5	16	5.0 - 4.5	20.107.115	○
ø 5.5	16	5.5 - 5.0	20.107.116	○
ø 6	16	6.0 - 5.5	20.107.117	○
ø 6.5	16	6.5 - 6.0	20.107.118	○
ø 7	16	7.0 - 6.5	20.107.119	○



Haka-avain

Key for Collet Nut

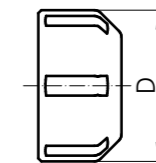
Type	Order Number	Stock
ER11 M	00 05 06	●
ER16 P	00 05 13	●
ER20 P	00 05 12	●
ER32	00 05 02	●



ER mutteri tiivisterenkaalle

Collet Nut for Seal Disk

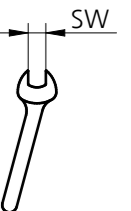
Type	D	Thread	Order Number	Stock
ER16 P	28	M22 x 1.5	20.107.210	●
ER20 P	34	M25 x 1.5	20.107.310	●
ER32	50	M40 x 1.5	20.107.510	●



Avain

Spanner Wrench

Type	SW	Order Number	Stock
ER11	13	53 00 13	●
ER16	22	53 00 22	●
ER20	27	53 00 27	●
ER32	41	53 00 41	●

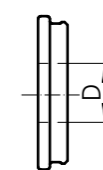


Tiivisterenkaat ER-muttereille

Seal Disc for Collet Nut

Type	D	Order Number	Stock
ER16	3.0 - 10.0	20.107.21XXX	●
ER20	3.0 - 13.0	20.107.31XXX	●
ER32	3.0 - 20.0	20.107.51XXX	●

XXX = ø D Shank diameter Example: D = 12 = 20.107.41120

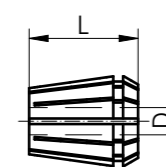


Holkit

Collets

Type	D	L	Order Number	Stock
ER11	3.0 - 7.0	18	62 11 XX	●
ER16	3.0 - 10.0	27.5	62 16 XX	●
ER20	3.0 - 13.0	31.5	62 20 XX	●
ER32	3.0 - 20.0	40	62 32 XX	●

XX = ø D Example: D = 12 = 62 25 12



Lisävarusteita

Accessories

Momenttiavain

Torque Screw Driver

System Size	Dimension	Torque	Order Number	Stock
RX 016	T6	0.9 Nm	G00 40 11	●
RX 019	T6	0.9 Nm	G00 40 11	●
RX 024	T8	1.5 Nm	G00 40 12	●
RX 029	T8	1.5 Nm	G00 40 12	●
RX 036	T8	1.5 Nm	G00 40 12	●
RX 044	T8	1.5 Nm	G00 40 12	●
RX 052	T8	1.5 Nm	G00 40 12	●
RX 061	T8	1.5 Nm	G00 40 12	●
RX 081	T15	3.5 Nm	G00 40 13	●
RX 101	T15	3.5 Nm	G00 40 13	●
RX 121	T15	3.5 Nm	G00 40 13	●
RX 141	T15	3.5 Nm	G00 40 13	●



Torx®-Momenttiavain SD mallin pitimille

Torx®-Torque Set of Wrenches for SD Holders

System Size	Dimension	Torque	Order Number	Stock
RX 016 - RX 036	T15 / T20 / T30	4 - 18 Nm	G00 40 20	▲
RX 016	T15	4 Nm	G00 40 23 *	▲
RX 019	T20	6 Nm	G00 40 24 *	▲
RX 024 / RX 029	T30	16 Nm	G00 40 25 *	▲
RX 036	T30	18 Nm	G00 40 25 *	▲



* Varaosat

* Spare Parts

Mittavälineet

Measuring Device

Type	Description	Order Number	Stock
Twin T10	Elektroninen heittokello, sisältää patterit Electronic measuring instrument, batteries incl.	04430013	○
LRC 6, AA	Patterit (3kpl) Batteries (3 piece)	04768002	○
GT 31	Mittapää Lever probe	03210802	○
MGA	Magneettijalka Magnetic articulated arm	01639022	○



Twin T10

MGA

Lisävarusteita

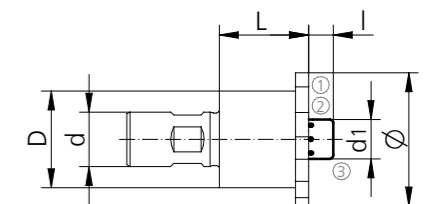
Accessories



Ruuvi josta vesikanavat sivuille

Step-Hole Flushing Screw

System Size	L	D	d	l	d1	Order Number	Stock
RX 044	30	32	18	8	13	Z90 02 00	●
RX 052	35	39	20	8	13	Z90 02 01	●
RX 061	40	46	25	10	16	Z90 02 02	●
RX 081	50	56	32	12	18	Z90 02 03	●
RX 101	60	76	40	14	24	Z90 02 04	●
RX 121	60	76	40	14	24	Z90 02 04	●
RX 141	60	76	40	14	24	Z90 02 04	●



Sopii vain seuraaviin. RXKB ja RXKBL

Note: Can only be used with RXKB and RXKBL

Yhteensopivat teräpalkanpitimet

Suitable Insert Holders

System Size	Ø-Range	L	D	d	Standard	Lightweight	Stock
					Order Number	Order Number	
RX 044	35.601 - 43.600	30	32	18	RXKB44 32 18 030		●
RX 052	43.601 - 51.600	35	39	20	RXKB52 39 20 035		●
RX 061	51.601 - 60.600	40	46	25	RXKB61 46 25 040		●
RX 081	60.601 - 80.600	50	56	32	RXKB81 56 32 050	RXKBL81 56 32 050	●
RX 101	80.601 - 100.600	60	76	40	RXKB101 76 40 060	RXKBL101 76 40 060	●
RX 121	100.601 - 120.600	60	76	40	RXKB121 76 40 060	RXKBL121 76 40 060	●
RX 141	120.601 - 140.600	60	76	40	RXKB141 76 40 060	RXKBL141 76 40 060	●

Varaosat

Spare Parts

System Size	①	②	③
RX 044	C00 90 02 (4x)	G00 20 02	G00 02 07
RX 052	C00 90 02 (5x)	G00 20 02	G00 02 07
RX 061	C00 90 02 (5x)	G00 20 02	G00 02 08
RX 081	C00 90 04 (4x)	G00 20 03	G00 02 09
RX 101	C00 90 04 (4x)	G00 20 03	G00 02 16
RX 121 / RX 141	C00 90 04 (8x)	G00 20 03	G00 02 16

● Varastossa
On stock▲ Lyhyellä toimitusajalla
Short-term availability○ Saatavilla tilauksesta
Availability on requestKaikki mitat metrisinä
All dimensions in mm

Lisävarusteita

Accessories



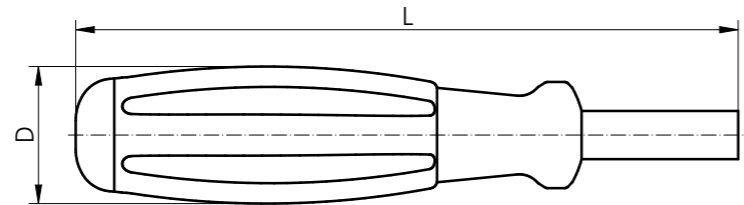
Työkalu teräpalanpoistoon

Insert Remover

Mallit

Bit Holder

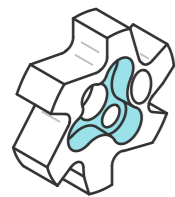
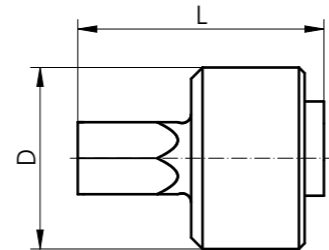
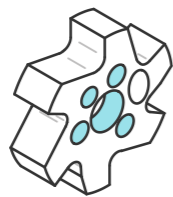
System Size	L	D	Order Number	Stock
RX 016	138	29	G00 90 00	●
RX 016 SD	138	29	G00 90 00	●
RX 019	138	29	G00 90 00	●
RX 019 SD	138	29	G00 90 00	●



Vaihtopäät

Insert Remover Bit

System Size	L	D	Order Number	Stock
RX 016	22	16	G00 90 16	●
RX 016 SD	22	16	G00 90 16SD	●
RX 019	22	16	G00 90 19	●
RX 019 SD	22	16	G00 90 19SD	●

Vakiomalli
Regular ShapeSD malli
SD Shape● Varastossa
On stock▲ Lyhyellä toimitusajalla
Short-term availability○ Saatavilla tilauksesta
Availability on requestKaikki mitat metrisinä
All dimensions in mm

Lisävarusteita

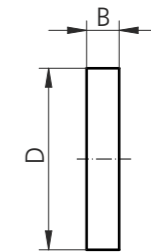
Accessories



Kellotus teräpala

Run-Out Indicating Insert

System Size	D	B	Order Number	Stock
RX 016	16	4.3	RXC016	●
RX 019	19	4.3	RXC019	●
RX 024	24	4.3	RXC024	●
RX 029	29	4.3	RXC029	●
RX 036	36	4.3	RXC036	●

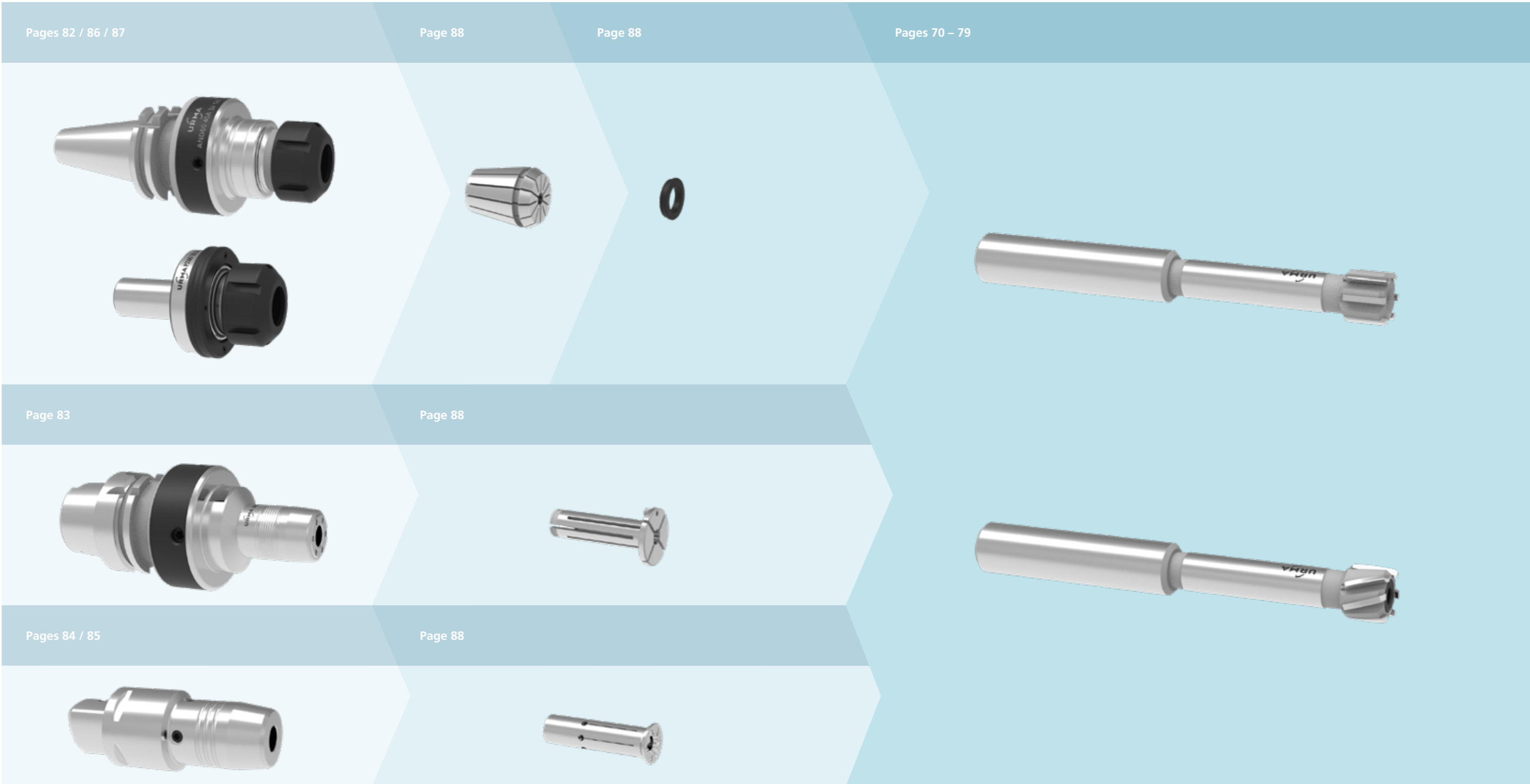
● Varastossa
On stock▲ Lyhyellä toimitusajalla
Short-term availability○ Saatavilla tilauksesta
Availability on requestKaikki mitat metrisinä
All dimensions in mm

URMA Reaming
RM vario

Ø 5.80 – 33.10 mm

Ø 5.80 – 33.10 mm

URMA Reaming RM vario



Ø 5.80 – 33.10 mm



Kalvaimet lieriövarrella (ilman läpijäähdytystä)

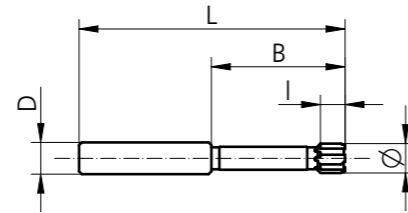
Solid Reamers, Cylindrical (without internal coolant supply)

A25N

Suoralla leikkuulla

Straight Fluted Inserts

Ø-Range	L	I	B	D _{h6}	Z	Stock
5.80 - 7.60	80	10	40	12	4	▲
7.61 - 8.60	80	10	40	12	4	▲
8.61 - 9.60	90	10	50	12	4	▲
9.61 - 10.60	90	10	50	12	4	▲
10.61 - 14.60	100	10	50	12	6	▲
14.61 - 15.60	100	14	50	12	6	▲
15.61 - 18.60	110	14	50	16	6	▲
18.61 - 21.10	130	14	60	20	6	▲
21.11 - 25.10	130	14	60	20	6	▲
25.11 - 28.10	145	18	75	25	6	▲
28.11 - 33.10	145	18	75	25	6	▲

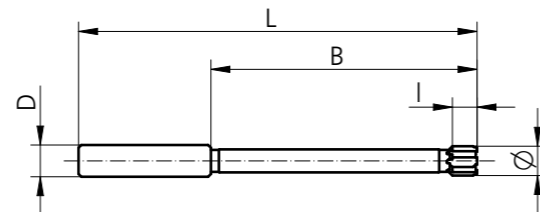


A45N

Suoralla leikkuulla

Straight Fluted Inserts

Ø-Range	L	I	B	D _{h6}	Z	Stock
5.80 - 7.60	120	10	80	12	4	▲
7.61 - 8.60	120	10	80	12	4	▲
8.61 - 9.60	130	10	90	12	4	▲
9.61 - 10.60	130	10	90	12	4	▲
10.61 - 14.60	150	10	100	12	6	▲
14.61 - 15.60	150	14	100	12	6	▲
15.61 - 18.60	160	14	100	16	6	▲
18.61 - 21.10	190	14	120	20	6	▲
21.11 - 25.10	190	14	120	20	6	▲
25.11 - 28.10	220	18	150	25	6	▲
28.11 - 33.10	220	18	150	25	6	▲



● Varastossa
On stock

▲ Lyhyellä toimitusajalla
Short-term availability

○ Saatavilla tilauksesta
Availability on request

Kaikki mitat metrisinä
All dimensions in mm

Ø 5.80 – 33.10 mm



Kalvaimet lieriövarrella (ilman läpijäähdytystä)

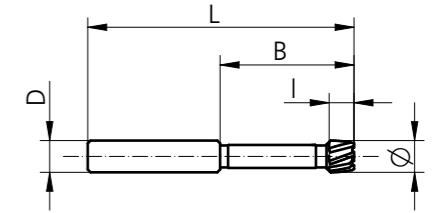
Solid Reamers, Cylindrical (without internal coolant supply)

A27N

Vasenkätinen leikkuu

Left Helical Fluted Inserts

Ø-Range	L	I	B	D _{h6}	Z	Stock
5.80 - 7.60	80	10	40	12	4	▲
7.61 - 8.60	80	10	40	12	4	▲
8.61 - 9.60	90	10	50	12	4	▲
9.61 - 10.60	90	10	50	12	4	▲
10.61 - 14.60	100	10	50	12	6	▲
14.61 - 15.60	100	14	50	12	6	▲
15.61 - 18.60	110	14	50	16	6	▲
18.61 - 21.10	130	14	60	20	6	▲
21.11 - 25.10	130	14	60	20	6	▲
25.11 - 28.10	145	18	75	25	6	▲
28.11 - 33.10	145	18	75	25	6	▲

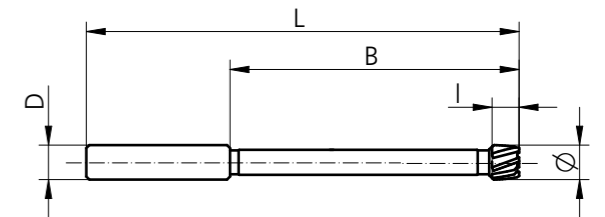


A47N

Vasenkätinen leikkuu

Left Helical Fluted Inserts

Ø-Range	L	I	B	D _{h6}	Z	Stock
5.80 - 7.60	120	10	80	12	4	▲
7.61 - 8.60	120	10	80	12	4	▲
8.61 - 9.60	130	10	90	12	4	▲
9.61 - 10.60	130	10	90	12	4	▲
10.61 - 14.60	150	10	100	12	6	▲
14.61 - 15.60	150	14	100	12	6	▲
15.61 - 18.60	160	14	100	16	6	▲
18.61 - 21.10	190	14	120	20	6	▲
21.11 - 25.10	190	14	120	20	6	▲
25.11 - 28.10	220	18	150	25	6	▲
28.11 - 33.10	220	18	150	25	6	▲



● Varastossa
On stock

▲ Lyhyellä toimitusajalla
Short-term availability

○ Saatavilla tilauksesta
Availability on request

Kaikki mitat metrisinä
All dimensions in mm

Ø 5.80 – 33.10 mm



Kalvaimet lieriövarrella (Läpijähdytyskanavalla)

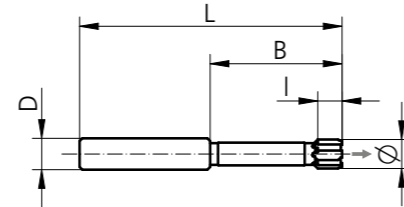
Solid Reamers, Cylindrical (with internal coolant supply)

C25N / B25N

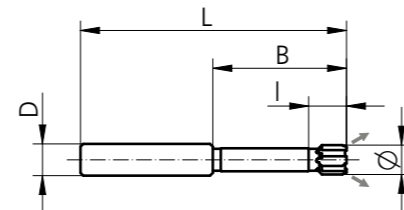
Suoralla leikkuulla
Straight Fluted Inserts

Ø-Range	L	I	B	D _{h6}	Z	Stock
5.80 - 7.60	80	10	40	12	4	▲
7.61 - 8.60	80	10	40	12	4	▲
8.61 - 9.60	90	10	50	12	4	▲
9.61 - 10.60	90	10	50	12	4	▲
10.61 - 14.60	100	10	50	12	6	▲
14.61 - 15.60	100	14	50	12	6	▲
15.61 - 18.60	110	14	50	16	6	▲
18.61 - 21.10	130	14	60	20	6	▲
21.11 - 25.10	130	14	60	20	6	▲
25.11 - 28.10	145	18	75	25	6	▲
28.11 - 33.10	145	18	75	25	6	▲

C25N



B25N

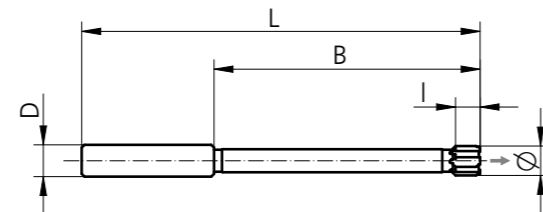


C45N / B45N

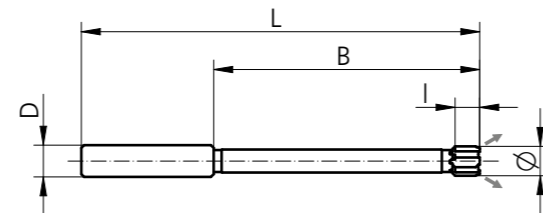
Suoralla leikkuulla
Straight Fluted Inserts

Ø-Range	L	I	B	D _{h6}	Z	Stock
5.80 - 7.60	120	10	80	12	4	▲
7.61 - 8.60	120	10	80	12	4	▲
8.61 - 9.60	130	10	90	12	4	▲
9.61 - 10.60	130	10	90	12	4	▲
10.61 - 14.60	150	10	100	12	6	▲
14.61 - 15.60	150	14	100	12	6	▲
15.61 - 18.60	160	14	100	16	6	▲
18.61 - 21.10	190	14	120	20	6	▲
21.11 - 25.10	190	14	120	20	6	▲
25.11 - 28.10	220	18	150	25	6	▲
28.11 - 33.10	220	18	150	25	6	▲

C45N



B45N



● Varastossa
On stock

▲ Lyhyellä toimitusajalla
Short-term availability

○ Saatavilla tilauksesta
Availability on request

Kaikki mitat metrisinä
All dimensions in mm

Ø 5.80 – 33.10 mm



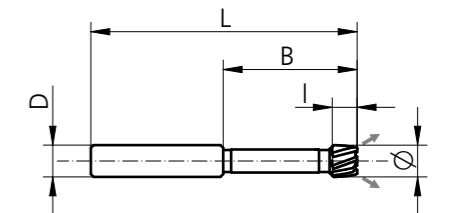
Kalvaimet lieriövarrella (Läpijähdytyskanavalla)

Solid Reamers, Cylindrical (with internal coolant supply)

B27N

Vasenkätisellä leikkuulla
Left Helical Fluted Inserts

Ø-Range	L	I	B	D _{h6}	Z	Stock
5.80 - 7.60	80	10	40	12	4	▲
7.61 - 8.60	80	10	40	12	4	▲
8.61 - 9.60	90	10	50	12	4	▲
9.61 - 10.60	90	10	50	12	4	▲
10.61 - 14.60	100	10	50	12	6	▲
14.61 - 15.60	100	14	50	12	6	▲
15.61 - 18.60	110	14	50	16	6	▲
18.61 - 21.10	130	14	60	20	6	▲
21.11 - 25.10	130	14	60	20	6	▲
25.11 - 28.10	145	18	75	25	6	▲
28.11 - 33.10	145	18	75	25	6	▲



● Varastossa
On stock

▲ Lyhyellä toimitusajalla
Short-term availability

○ Saatavilla tilauksesta
Availability on request

Kaikki mitat metrisinä
All dimensions in mm

Ø 5.80 – 33.10 mm



Kalvaimet lieriövarrella (Läpijähdytyksellä)

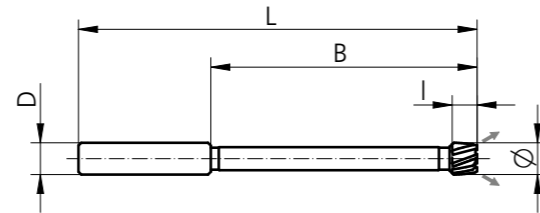
Solid Reamers, Cylindrical (with internal coolant supply)

B47N

Vasenkätisellä leikkuulla

Left Helical Fluted Inserts

Ø-Range	L	I	B	D _{h6}	Z	Stock
5.80 - 7.60	120	10	80	12	4	▲
7.61 - 8.60	120	10	80	12	4	▲
8.61 - 9.60	130	10	90	12	4	▲
9.61 - 10.60	130	10	90	12	4	▲
10.61 - 14.60	150	10	100	12	6	▲
14.61 - 15.60	150	14	100	12	6	▲
15.61 - 18.60	160	14	100	16	6	▲
18.61 - 21.10	190	14	120	20	6	▲
21.11 - 25.10	190	14	120	20	6	▲
25.11 - 28.10	220	18	150	25	6	▲
28.11 - 33.10	220	18	150	25	6	▲



● Varastossa
On stock

▲ Lyhyellä toimitusajalla
Short-term availability

○ Saatavilla tilauksesta
Availability on request

Kaikki mitat metrisinä
All dimensions in mm

Ø 5.80 – 33.10 mm



Paisuntakalvaimet lieriövarrella (Ilman läpijähdytystä)

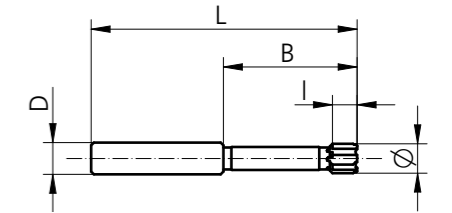
Expandable Reamers, Cylindrical (without internal coolant supply)

D25N

Suoralla leikkuulla

Straight Fluted Inserts

Ø-Range	L	I	B	D _{h6}	Z	Stock
5.80 - 7.60	80	10	40	12	4	▲
7.61 - 8.60	80	10	40	12	4	▲
8.61 - 9.60	90	10	50	12	4	▲
9.61 - 10.60	90	10	50	12	4	▲
10.61 - 14.60	100	10	50	12	6	▲
14.61 - 15.60	100	14	50	12	6	▲
15.61 - 18.60	110	14	50	16	6	▲
18.61 - 21.10	130	14	60	20	6	▲
21.11 - 25.10	130	14	60	20	6	▲
25.11 - 28.10	145	18	75	25	6	▲
28.11 - 33.10	145	18	75	25	6	▲

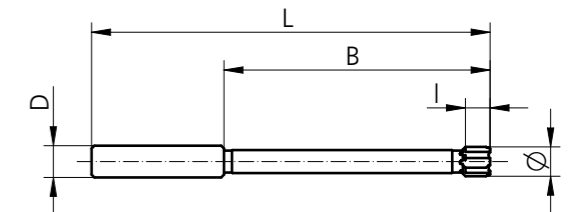


D45N

Suoralla leikkuulla

Straight Fluted Inserts

Ø-Range	L	I	B	D _{h6}	Z	Stock
5.80 - 7.60	120	10	80	12	4	▲
7.61 - 8.60	120	10	80	12	4	▲
8.61 - 9.60	130	10	90	12	4	▲
9.61 - 10.60	130	10	90	12	4	▲
10.61 - 14.60	150	10	100	12	6	▲
14.61 - 15.60	150	14	100	12	6	▲
15.61 - 18.60	160	14	100	16	6	▲
18.61 - 21.10	190	14	120	20	6	▲
21.11 - 25.10	190	16	120	20	6	▲
25.11 - 28.10	220	18	150	25	6	▲
28.11 - 33.10	220	18	150	25	6	▲



● Varastossa
On stock

▲ Lyhyellä toimitusajalla
Short-term availability

○ Saatavilla tilauksesta
Availability on request

Kaikki mitat metrisinä
All dimensions in mm

Ø 5.80 – 33.10 mm



Paisuntakalvaimet lieriövarrella (Ilman läpijähdytystä)

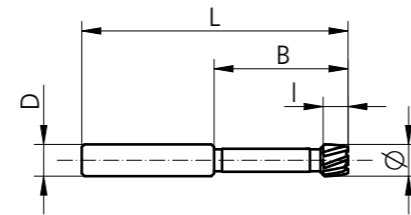
Expandable Reamers, Cylindrical (without internal coolant supply)

D27N

Vasenkätisellä leikkuulla

Left Helical Fluted Inserts

Ø-Range	L	I	B	D _{h6}	Z	Stock
5.80 - 7.60	80	10	40	12	4	▲
7.61 - 8.60	80	10	40	12	4	▲
8.61 - 9.60	90	10	50	12	4	▲
9.61 - 10.60	90	10	50	12	4	▲
10.61 - 14.60	100	10	50	12	6	▲
14.61 - 15.60	100	14	50	12	6	▲
15.61 - 18.60	110	14	50	16	6	▲
18.61 - 21.10	130	14	60	20	6	▲
21.11 - 25.10	130	14	60	20	6	▲
25.11 - 28.10	145	18	75	25	6	▲
28.11 - 33.10	145	18	75	25	6	▲

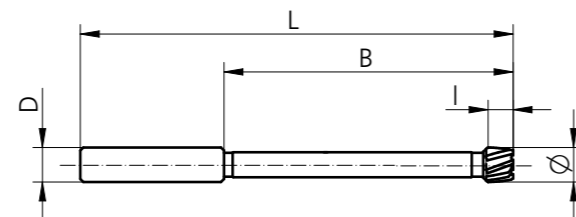


D47N

Vasenkätisellä leikkuulla

Left Helical Fluted Inserts

Ø-Range	L	I	B	D _{h6}	Z	Stock
5.80 - 7.60	120	10	80	12	4	▲
7.61 - 8.60	120	10	80	12	4	▲
8.61 - 9.60	130	10	90	12	4	▲
9.61 - 10.60	130	10	90	12	4	▲
10.61 - 14.60	150	10	100	12	6	▲
14.61 - 15.60	150	14	100	12	6	▲
15.61 - 18.60	160	14	100	16	6	▲
18.61 - 21.10	190	14	120	20	6	▲
21.11 - 25.10	190	14	120	20	6	▲
25.11 - 28.10	220	18	150	25	6	▲
28.11 - 33.10	220	18	150	25	6	▲



● Varastossa
On stock

▲ Lyhyellä toimitusajalla
Short-term availability

○ Saatavilla tilauksesta
Availability on request

Kaikki mitat metrisinä
All dimensions in mm

Ø 5.80 – 33.10 mm



Paisuntakalvaimet lieriövarrella (Läpijähdytyksellä)

Expandable Reamers, Cylindrical (with internal coolant supply)

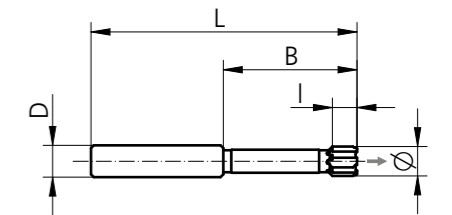
G25N / F25N

Suoralla leikkuulla

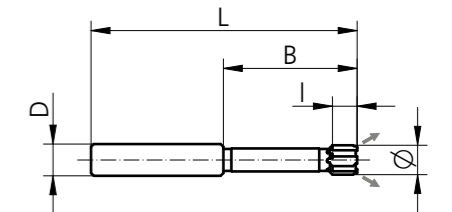
Straight Fluted Inserts

Ø-Range	L	I	B	D _{h6}	Z	Stock
5.80 - 7.60	80	10	40	12	4	▲
7.61 - 8.60	80	10	40	12	4	▲
8.61 - 9.60	90	10	50	12	4	▲
9.61 - 10.60	90	10	50	12	4	▲
10.61 - 14.60	100	10	50	12	6	▲
14.61 - 15.60	100	14	50	12	6	▲
15.61 - 18.60	110	14	50	16	6	▲
18.61 - 21.10	130	14	60	20	6	▲
21.11 - 25.10	130	14	60	20	6	▲
25.11 - 28.10	145	18	75	25	6	▲
28.11 - 33.10	145	18	75	25	6	▲

G25N



F25N



● Varastossa
On stock

▲ Lyhyellä toimitusajalla
Short-term availability

○ Saatavilla tilauksesta
Availability on request

Kaikki mitat metrisinä
All dimensions in mm

Ø 5.80 – 33.10 mm



Paisuntakalvaimet lieriövarrella (Läpijähdytyksellä)

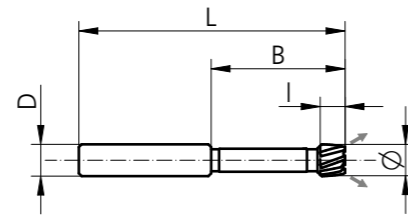
Expandable Reamers, Cylindrical (with internal coolant supply)

F27N

Vasenkätisellä leikkuulla

Left Helical Fluted Inserts

Ø-Range	L	I	B	D _{h6}	Z	Stock
5.80 - 7.60	80	10	40	12	4	▲
7.61 - 8.60	80	10	40	12	4	▲
8.61 - 9.60	90	10	50	12	4	▲
9.61 - 10.60	90	10	50	12	4	▲
10.61 - 14.60	100	10	50	12	6	▲
14.61 - 15.60	100	14	50	12	6	▲
15.61 - 18.60	110	14	50	16	6	▲
18.61 - 21.10	130	14	60	20	6	▲
21.11 - 25.10	130	14	60	20	6	▲
25.11 - 28.10	145	18	75	25	6	▲
28.11 - 33.10	145	18	75	25	6	▲

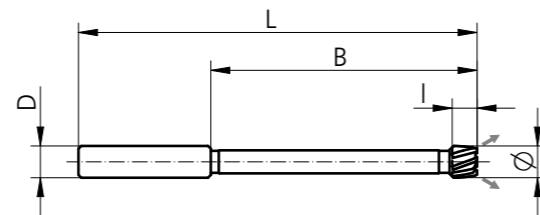


F47N

Vasenkätisellä leikkuulla

Left Helical Fluted Inserts

Ø-Range	L	I	B	D _{h6}	Z	Stock
5.80 - 7.60	120	10	80	12	4	▲
7.61 - 8.60	120	10	80	12	4	▲
8.61 - 9.60	130	10	90	12	4	▲
9.61 - 10.60	130	10	90	12	4	▲
10.61 - 14.60	150	10	100	12	6	▲
14.61 - 15.60	150	14	100	12	6	▲
15.61 - 18.60	160	14	100	16	6	▲
18.61 - 21.10	190	14	120	20	6	▲
21.11 - 25.10	190	16	120	20	6	▲
25.11 - 28.10	220	18	150	25	6	▲
28.11 - 33.10	220	18	150	25	6	▲



● Varastossa
On stock

▲ Lyhyellä toimitusajalla
Short-term availability

○ Saatavilla tilauksesta
Availability on request

Kaikki mitat metrisinä
All dimensions in mm

Ø 5.80 – 33.10 mm



Paisuntakalvaimet lieriövarrella (Läpijähdytyksellä)

Expandable Reamers, Cylindrical (with internal coolant supply)

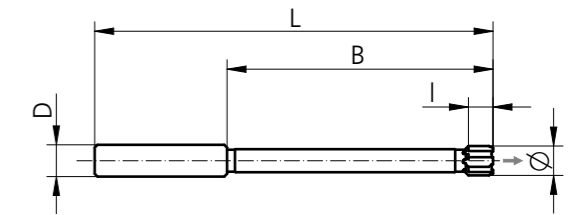
G45N / F45N

Suoralla leikkuulla

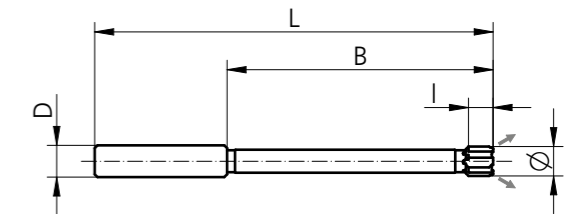
Straight Fluted Inserts

Ø-Range	L	I	B	D _{h6}	Z	Stock
5.80 - 7.60	120	10	80	12	4	▲
7.61 - 8.60	120	10	80	12	4	▲
8.61 - 9.60	130	10	90	12	4	▲
9.61 - 10.60	130	10	90	12	4	▲
10.61 - 14.60	150	10	100	12	6	▲
14.61 - 15.60	150	14	100	12	6	▲
15.61 - 18.60	160	14	100	16	6	▲
18.61 - 21.10	190	14	120	20	6	▲
21.11 - 25.10	190	14	120	20	6	▲
25.11 - 28.10	220	14	150	25	6	▲
28.11 - 33.10	220	18	150	25	6	▲

G45N



F45N



● Varastossa
On stock

▲ Lyhyellä toimitusajalla
Short-term availability

○ Saatavilla tilauksesta
Availability on request

Kaikki mitat metrisinä
All dimensions in mm

Tilauseimerkkejä

Order Example

ISO Toleranssi

Bore diameter: ISO bore tolerances

Reiän toleranssi

Bore diameter: Bore tolerance in μm

Example

Tilauseimerkkejä

Order example
F25N-12.2H7-A W112R

Tilauseimerkkejä

Order example
F25N-12.2+20-10-A W112R

Example

F

Lieriövarsi

A = Ilman läpijäähdytystä
 B = Läpijäähdytys läpireiälle
 C = Läpijäähdytys pohjareiälle
 D = Säädettävä halkaisija, ilman läpijäähdytystä
 F = Säädettävä halkaisija, läpijäähdytys läpireiälle
 G = Säädettävä halkaisija, läpijäähdytys pohjareiälle
 S = Erikoistyökalu, piirustuksen mukaan

Cylindrical shank
 A = solid, without internal coolant supply
 B = solid, with internal coolant supply for through bores
 C = solid, with internal coolant supply for blind holes
 D = expandable, without internal coolant supply
 F = expandable, with internal coolant supply for through bores
 G = expandable, with internal coolant supply for blind holes
 S = special tool (according to drawing)

2

2 = Lyhyt malli
 4 = Pitkä malli
 2 = short version
 4 = long version

5N

5N = Suorat lastu-urat
 7N = Lastu-urat vasenkätiset ja nousulliset
 5N = flute form straight
 7N = flute form left-hand helix

Diameter

12.2

Halkaisija (mm)
 Diameter (mm)

H7

Toleranssi ISO vakio
 Tolerance in ISO standard

A

Viisteen leikkuukulma

A = 45°¹ B = 25°² C = 45/8° D = 30/4°
 E = nousukulma 20°³ F = Leikkaava otsapinta G = 0,5 x 45°
 H = 30° I = 60° K = 75° L = nousukulma 30°³

Chamfer Angle
 A = 45°¹ B = 25°² C = 45/8° D = 30/4°
 E = Curling cut 20°³ F = Face cutting G = 0,5 x 45°
 H = 30° I = 60° K = 75° L = Curling cut 30°³

W1

Materiaali

Lisää tietoa "Reaming Technology Guide" katalogista
 Cutting material
 For details see «Reaming Technology Guide»

12R

Pinnoite

Lisää tietoa "Reaming Technology Guide" katalogista
 Coating
 For details see «Reaming Technology Guide»

F

Lieriövarsi

A = Ilman läpijäähdytystä
 B = Läpijäähdytys läpireiälle
 C = Läpijäähdytys pohjareiälle
 D = Säädettävä halkaisija, ilman läpijäähdytystä
 F = Säädettävä halkaisija, läpijäähdytys läpireiälle
 G = Säädettävä halkaisija, läpijäähdytys pohjareiälle
 S = Erikoistyökalu, piirustuksen mukaan

Cylindrical shank
 A = solid, without internal coolant supply
 B = solid, with internal coolant supply for through bores
 C = solid, with internal coolant supply for blind holes
 D = expandable, without internal coolant supply
 F = expandable, with internal coolant supply for through bores
 G = expandable, with internal coolant supply for blind holes
 S = special tool (according to drawing)

2

2 = Lyhyt malli
 4 = Pitkä malli
 2 = short version
 4 = long version

5N

5N = Suorat lastu-urat
 7N = Lastu-urat vasenkätiset ja nousulliset
 5N = flute form straight
 7N = flute form left-hand helix

Diameter

12.2

Halkaisija (mm)
 Diameter (mm)

+20-10

Reiän toleranssi (μm)
 Bore tolerance (μm)

A

Viisteen leikkuukulma

A = 45°¹ B = 25°² C = 45/8° D = 30/4°
 E = nousukulma 20°³ F = Leikkaava otsapinta G = 0,5 x 45°
 H = 30° I = 60° K = 75° L = nousukulma 30°³

Chamfer Angle
 A = 45°¹ B = 25°² C = 45/8° D = 30/4°
 E = Curling cut 20°³ F = Face cutting G = 0,5 x 45°
 H = 30° I = 60° K = 75° L = Curling cut 30°³

W1

Materiaali

Lisää tietoa "Reaming Technology Guide" katalogista
 Cutting material
 For details see «Reaming Technology Guide»

12R

Pinnoite

Lisää tietoa "Reaming Technology Guide" katalogista
 Coating
 For details see «Reaming Technology Guide»

¹ vakio suoralla leikkuulla
¹ Standard for straight flute form

² vakio vasenkätisillä nousullisilla lastu-urilla oleville työkaluille
² Standard for tools with left-hand flute form

³ vain suorauraisille työkaluille
³ only for straight flute form

Ø 5.80 – 33.10 mm

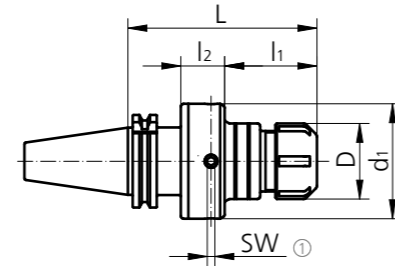


Kompensaatiopitimet ER-holkilla

Compensation Collet Chuck

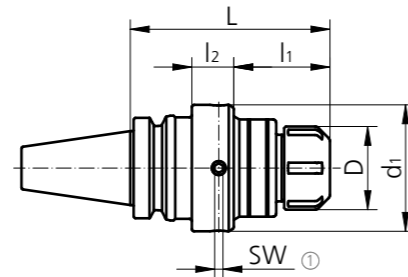
DIN 69871-AD

Size	Type	Ø-Range	L	l ₁	l ₂	D	d ₁	SW	kg	Order Number	Stock
SK 40	ER32	3.0 - 20.0	120	56	29	50	76	5	2.2	AND60 40A 32 120	▲
SK 40	ER40	3.0 - 26.0	135	68	32	63	76	5	2.2	AND60 40A 40 135	▲
SK 50	ER32	3.0 - 20.0	120	61	24	50	76	5	4.1	AND60 50A 32 120	▲
SK 50	ER40	3.0 - 26.0	135	76	24	63	76	5	4.2	AND60 50A 40 135	▲



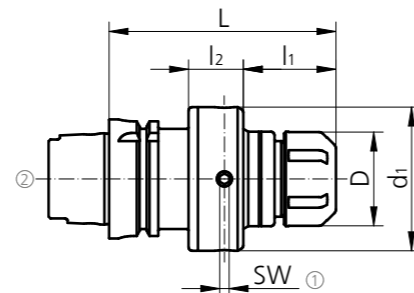
MAS-BT JIS 6339-AD

Size	Type	Ø-Range	L	l ₁	l ₂	D	d ₁	SW	kg	Order Number	Stock
BT 40	ER32	3.0 - 20.0	120	54	29	50	76	5	2.2	ANT60 40A 32 120	▲
BT 40	ER40	3.0 - 26.0	135	66	32	63	75	5	2.3	ANT60 40A 40 135	▲
BT 50	ER32	3.0 - 20.0	120	58	24	50	76	5	4.5	ANT60 50A 32 120	▲
BT 50	ER40	3.0 - 26.0	135	73	24	63	76	5	4.5	ANT60 50A 40 135	▲



DIN 69893-HSK-A

Size	Type	Ø-Range	L	l ₁	l ₂	D	d ₁	SW	kg	Order Number	Stock
HSK 63	ER32	3.0 - 20.0	120	49	29	50	76	5	2	ANH60 63A 32 120	▲
HSK 63	ER40	3.0 - 26.0	135	64	29	63	76	5	1.9	ANH60 63A 40 135	▲
HSK 100	ER32	3.0 - 20.0	120	67	24	50	76	5	3.4	ANH60 100A 32 120	▲
HSK 100	ER40	3.0 - 26.0	135	82	24	63	76	5	3.3	ANH60 100A 40 135	▲



Toimitus sisältää: Tiivisterenkaalle soveltuvan ER mutterin sekä vesiputken

Scope of delivery: Collet nut for seal disk and coolant tube included

Holkit ja tiivisterenkaat sivu 88

Collets and seal disc page 88

Varaosat

Spare Parts

Size	①
	C00 03 44

Vesiputki

Coolant Tube

Size	②
63	H00 63 01
100	H00 100 01

Ø 5.80 – 33.10 mm

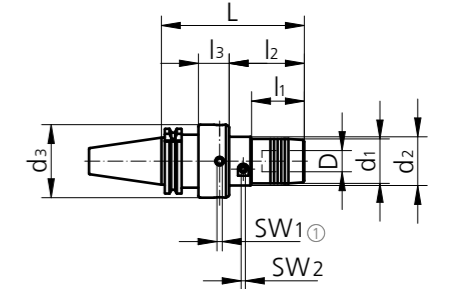


Hydraulikompensaatiopidin

Compensating Hydraulic Chuck

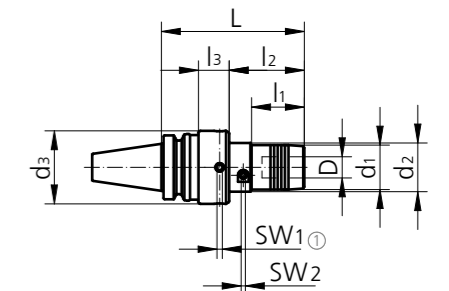
DIN 69871-AD

Size	L	l ₁	l ₂	l ₃	D	d ₁	d ₂	d ₃	SW ₁	SW ₂	kg	Order Number	Stock
SK 40	135	50	71	29	20	42	46	69	5	4	2.5	AND65 40A 20 135	○
SK 40	180	111	-	34	32	62	-	88	6	6	3.8	AND65 40A 32 180	○
SK 50	160	70	92	34	20	42	46	69	5	4	5	AND65 50A 20 160	○
SK 50	180	111	-	34	32	62	-	88	6	6	6.4	AND65 50A 32 180	○



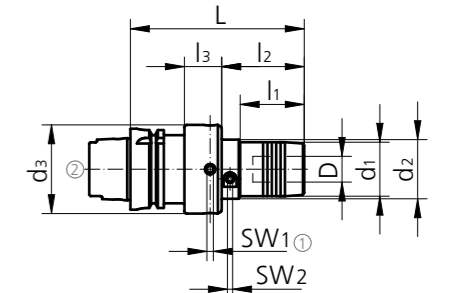
MAS-BT JIS 6339-AD

Size	L	l ₁	l ₂	l ₃	D	d ₁	d ₂	d ₃	SW ₁	SW ₂	kg	Order Number	Stock
BT 40	135	50	71	29	20	42	46	69	5	4	2.5	ANT65 40A 20 135	○
BT 40	180	111	-	34	32	62	-	88	6	6	3.9	ANT65 40A 32 180	○
BT 50	135	50	73	24	20	42	46	69	5	4	4.8	ANT65 50A 20 135	○
BT 50	180	116	-	26	32	62	-	88	6	6	6.5	ANT65 50A 32 180	○



DIN 69893-HSK-A

Size	L	l ₁	l ₂	l ₃	D	d ₁	d ₂	d ₃	SW ₁	SW ₂	kg	Order Number	Stock
HSK 63	135	50	64	29	20	42	46	69	5	4	2.2	ANH65 63A 20 135	○
HSK 63	180	104	-	34	32	62	-	88	6	6	4.2	ANH65 63A 32 180	○
HSK 100	135	50	82	24	20	42	46	69	5	4	3.4	ANH65 100A 20 135	○
HSK 100	165	110	-	26	32	62	-	88	6	6	4.9	ANH65 100A 32 165	○



Toimitus sisältää vesiputken

Scope of delivery: Coolant tube included

Holkit sivulla 88. Lisätietoja www.schunk.com

Reducers are on page 88. For further dimensions see www.schunk.com

Varaosat

Spare Parts

D	①
20	C00 03 44
32	C00 03 45

Vesiputki

Coolant Tube

Size	②
63	H00 63 01
100	H00 100 01

● Varastossa
On stock

▲ Lyhyellä toimitusajalla
Short-term availability

○ Saatavilla tilauksesta
Availability on request

Kaikki mitat metrisinä
All dimensions in mm

Ø 5.80 – 33.10 mm

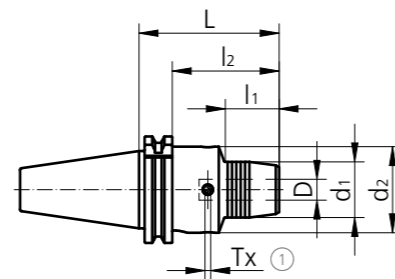


Schunk "Tendo Zero" hydraulikompensaatiopidin

Schunk "Tendo Zero" Hydro-Compensation Chuck

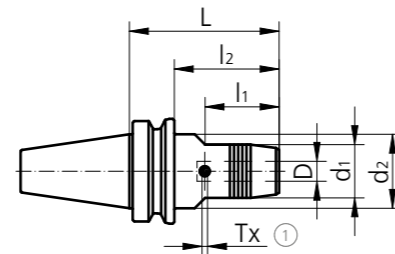
DIN 69871-AD/B

Size	L	l ₁	l ₂	D	d ₁	d ₂	Tx	kg	Schunk Order Number	Stock
SK 40	81	34	62	20	42	50	T15	1.4	204266 Z	▲
SK 40	81	26	62	32	63	80	T15	2	204267 Z	▲
SK 50	81	34	62	20	42	50	T15	3.3	204246 Z	▲
SK 50	104	63	84	32	64	70	T15	4.4	204247 Z	○



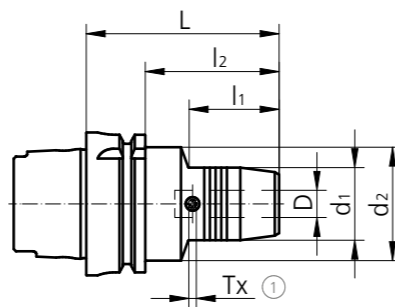
MAS-BT JIS 6339-AD/B

Size	L	l ₁	l ₂	D	d ₁	d ₂	Tx	kg	Schunk Order Number	Stock
BT 30	90	48	63	20	42	45	T15	1.5	205636 Z	▲
BT 40	90	48	63	20	42	45	T15	1.5	204445 Z	▲
BT 50	90	34	52	20	42	45	T15	4	204457 Z	▲
BT 50	120	63	82	32	64	70	T15	5.3	204458 Z	▲



DIN 69893-HSK-A

Size	L	l ₁	l ₂	D	d ₁	d ₂	Tx	kg	Schunk Order Number	Stock
HSK 63	90	48	64	20	42	50	T15	1.3	204056 Z	▲
HSK 63	120	59	94	25	57	63	T15	2.2	204057 Z	▲
HSK 63	125	63	99	32	64	75	T15	2.7	204058 Z	▲
HSK 100	105	59	76	20	42	50	T15	2.8	204066 Z	▲
HSK 100	110	62	81	25	57	63	T15	2.8	204067 Z	▲
HSK 100	110	62	81	32	64	75	T15	3.8	204068 Z	▲



* Vesiputki ei sisälly hintaan.

* Coolant tube is not included.

Holkit sivulla 88.

Lisätietoja www.schunk.com

Reducers are on page 88.

For further dimensions see www.schunk.com

Varaosat

Spare Parts

Size	①
	9954676

Vesiputki

Coolant Tube

Size	②
63	H00 63 01
100	H00 100 01

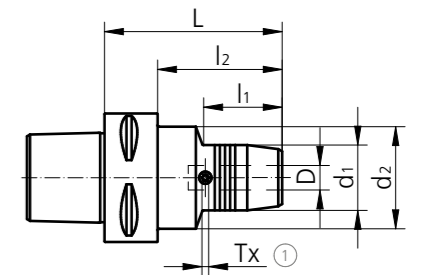
Ø 5.80 – 33.10 mm

Schunk "Tendo Zero" hydraulikompensaatiopidin

Schunk "Tendo Zero" Hydro-Compensation Chuck

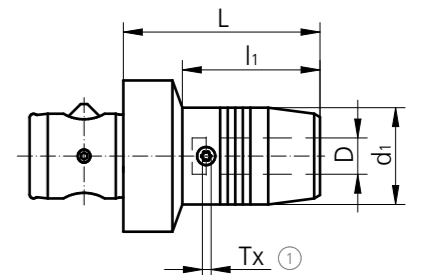
DIN 26623-1-PSC

Size	L	l ₁	l ₂	D	d ₁	d ₂	Tx	kg	Schunk Order Number	Stock
PSC 50	90	52	-	20	42	50	T15	1.05	201846 Z	▲
PSC 63	97	55	-	20	42	63	T15	1.6	201856 Z	▲
PSC 63	110	62	-	32	63	63	T15	2.8	201858 Z	▲



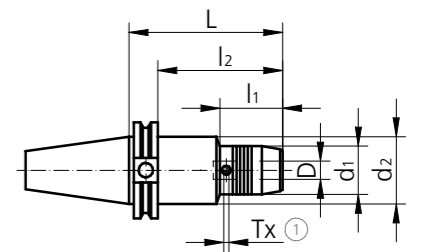
ABS-H

Size	L	l ₁	l ₂	D	d ₁	d ₂	Tx	kg	Schunk Order Number	Stock
ABS 50	75	58	-	20	42	-	T15	0.9	204576 Z	▲



ASME B5.50-CAT-AD/B

Size	L	l ₁	l ₂	D	d ₁	d ₂	Tx	kg	Schunk Order Number	Stock
CAT 40	102	50	83	20	38	45	T15	2	203666 Z	○
CAT 50	102	50	83	20	42	70	T15	2.8	204666 Z	○
CAT 50	102	65	83	32	64	70	T15	4.1	204668 Z	○



Holkit sivulla 88.

Lisätietoja www.schunk.com

Reducers are on page 88.

For further dimensions see www.schunk.com

Varaosat

Spare Parts

Size	①
	9954676

● Varastossa
On stock

▲ Lyhyellä toimitusajalla
Short-term availability

○ Saatavilla tilauksesta
Availability on request

Kaikki mitat metrisinä
All dimensions in mm

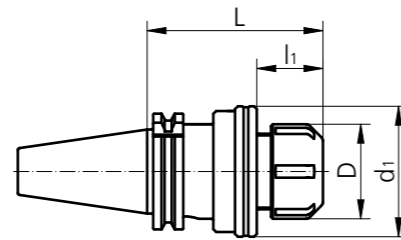
Ø 5.80 – 33.10 mm



Uiva-istukka
Floating Chuck

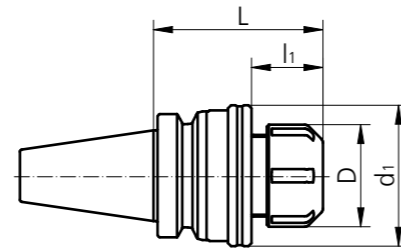
DIN 69871-AD

Size	Type	Ø-Range	L	l ₁	D	d ₁	OZ	kg	Order Number	Stock
SK 40	ER25	3.0 - 16.0	88	26	42	57	± 1	-	PD60 40A 25 088	○
SK 40	ER32	3.0 - 20.0	93	27	50	69	± 1	-	PD60 40A 32 093	○
SK 40	ER40	3.0 - 26.0	99	33	63	79	± 1	-	PD60 40A 40 099	○
SK 50	ER25	3.0 - 16.0	88	26	42	57	± 1	-	PD60 50A 25 088	○
SK 50	ER32	3.0 - 20.0	93	27	50	69	± 1	-	PD60 50A 32 093	○
SK 50	ER40	3.0 - 26.0	99	33	63	79	± 1	-	PD60 50A 40 099	○



MAS-BT JIS 6339-AD

Size	Type	Ø-Range	L	l ₁	D	d ₁	OZ	kg	Order Number	Stock
BT 30	ER20	3.0 - 13.0	70	-	35	-	± 1	-	PT60 30A 20 070*	○
BT 40	ER25	3.0 - 16.0	78	26	42	57	± 1	-	PT60 40A 25 078*	○
BT 40	ER32	3.0 - 20.0	83	27	50	69	± 1	-	PT60 40A 32 083*	○
BT 40	ER40	3.0 - 26.0	89	33	63	79	± 1	-	PT60 40A 40 089*	○
BT 50	ER25	3.0 - 16.0	88	26	42	57	± 1	-	PT60 50A 25 088*	○
BT 50	ER32	3.0 - 20.0	93	27	50	69	± 1	-	PT60 50A 32 093*	○
BT 50	ER40	3.0 - 26.0	99	33	63	79	± 1	-	PT60 50A 40 099*	○



Toimitus sisältää tiivistemallisen mutterin

Scope of delivery: Collet nosepiece for seal disk included

Holkit ja tiivisterenkaat sivu 88

Collets and seal disc page 88

OZ Joustomatka

Floating range

● Varastossa
On stock

▲ Lyhyellä toimitusajalla
Short-term availability

○ Saatavilla tilauksesta
Availability on request

Kaikki mitat metrisinä
All dimensions in mm

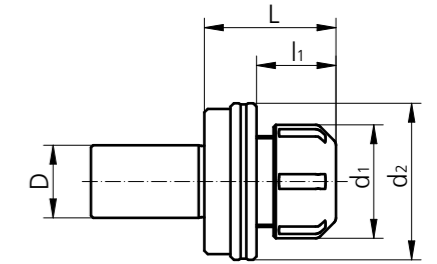
Ø 5.80 – 33.10 mm



Uiva-istukka sorveille
Floating Chuck for Lathes

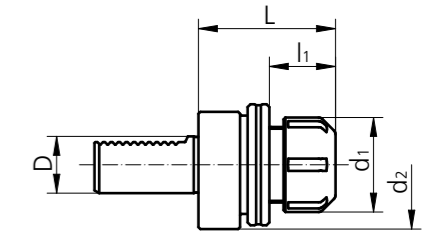
Cylindrical shaft DIN 1835-A

Adaptors	Type	Ø-Range	L	l ₁	D	d ₁	d ₂	OZ	kg	Order Number	Stock
ZS 20	ER25	3.0 - 16.0	53	26	20	42	57	± 1	0.6	PZ60 25 20 053	●
ZS 25	ER32	3.0 - 20.0	58	27	25	50	69	± 1.5	1.0	PZ60 32 25 058	●
ZS 32	ER32	3.0 - 20.0	58	27	32	50	69	± 1.5	1.1	PZ60 32 32 058	●
ZS 25	ER40	3.0 - 26.0	64	33	25	63	79	± 1.5	1.4	PZ60 40 25 064	●
ZS 32	ER40	3.0 - 26.0	64	33	32	63	79	± 1.5	1.5	PZ60 40 32 064	●



DIN 69880-VDI

Adaptors	Type	Ø-Range	L	l ₁	D	d ₁	d ₂	OZ	kg	Order Number	Stock
VDI 20	ER25	3.0 - 16.0	57	26	20	42	57	± 1	-	PV60 25 20 057	○
VDI 30	ER25	3.0 - 16.0	64	26	30	42	68	± 1	-	PV60 25 30 064	○
VDI 30	ER32	3.0 - 20.0	72	27	30	50	68	± 1.5	-	PV60 32 30 072	●
VDI 40	ER32	3.0 - 20.0	74	27	40	50	83	± 1.5	1.9	PV60 32 40 074	●
VDI 40	ER40	3.0 - 26.0	74	33	40	63	83	± 1.5	-	PV60 40 40 074	●



Toimitus sisältää tiivistemallisen mutterin

Scope of delivery: Collet nosepiece for seal disk included

Muita kokoja tilauksesta

Other dimensions on request

Holkit ja tiivisterenkaat sivu 88

Collets and seal disc page 88

ZS Sylinterimalli

Cylindrical shank

OZ Joustomatka

Floating range

● Varastossa
On stock

▲ Lyhyellä toimitusajalla
Short-term availability

○ Saatavilla tilauksesta
Availability on request

Kaikki mitat metrisinä
All dimensions in mm

Lisävarusteita

Accessories

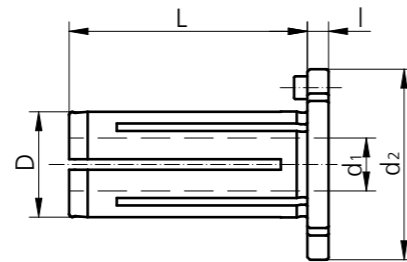
Lisävarusteet pitimiin

Accessories and Spare Parts for Compensation Holder

Holkki hydraulikompensaatiopitimiin

Reducers for Hydro-Compensation Chuck

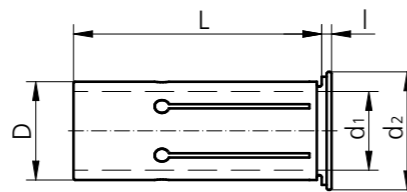
L	l	D	d ₁	d ₂	Order Number	Stock
49	4	20	12	36	67 20 12	●
49	4	20	16	36	67 20 16	●
69	4	32	20	51	67 32 20	●
69	4	32	25	51	67 32 25	●



Holkki "Schunk-hydraulikompensaatiopitimiin"

Reducers for Hydro-Compensation Chuck "Schunk"

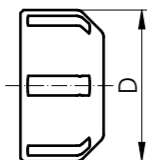
L	l	D	d ₁	d ₂	Order Number	Stock
50.5	2	20	12	24.0	0207929	●
50.5	2	20	16	24.0	0207933	●
60.5	3	32	20	35.5	0207947	●
60.5	3	32	25	35.5	0207948	●



ER mutteri tiivisterenkaalle

Collet Nut for Seal Disk

Type	D	Thread	Order Number	Stock
ER20	34	M25 x 1.5	20.107.310	●
ER25	42	M32 x 1.5	20.107.410	●
ER32	50	M40 x 1.5	20.107.510	●
ER40	63	M50 x 1.5	20.107.610	●



Sisältyy toimitukseen

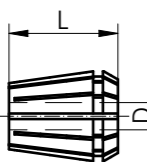
Included in delivery

ER-holkit

Collets

Type	D	L	Order Number	Stock
ER20	3.0 - 13.0	31.5	62 20 XX	●
ER25	3.0 - 16.0	35	62 25 XX	●
ER32	3.0 - 20.0	40	62 32 XX	●
ER40	3.0 - 26.0	46	62 40 XX	●

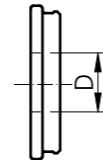
XX = ø D Example: D = 12 = 62 25 12



Tiivisterengas

Seal Disc for Collet Nut

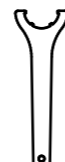
Type	D	Order Number	Stock
ER20	3.0 - 13.0	20.107.31XXX	●
ER25	3.0 - 16.0	20.107.41XXX	●
ER32	3.0 - 20.0	20.107.51XXX	●
ER40	3.0 - 26.0	20.107.61XXX	●

XXX = ø D Ø insert holders
Example: D = 12 = 20.107.41120

Haka-avaimet ER-holkeille

Key for Collet Nut

Type	Order Number	Stock
ER20	00 05 12	●
ER25	00 05 05	●
ER32	00 05 02	●
ER40	00 05 03	●



Lisävarusteita

Accessories

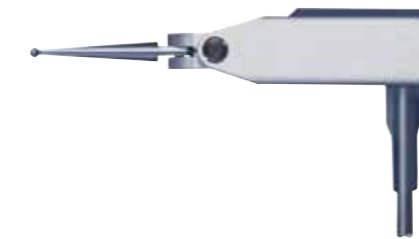
Mittavälineet

Measuring Device

Type	Description	Order Number	Stock
Twin T10	Elektroninen heittokello, sisältää patterit Electronic measuring instrument, batteries incl.	04430013	○
LRC 6, AA	Patterit (3kpl) Batteries (3 piece)	04768002	○
GT 31	Mittapää Lever probe	03210802	○
MGA	Magneettijalka Magnetic articulated arm	01639022	○



Twin T10



GT 31



MGA



URMA AG WERKZEUGFABRIK

Obermatt 3
CH-5102 Rapperswil
Switzerland
T +41 62 889 20 20
F +41 62 889 20 28
info@urma.ch
www.urma.ch

SWISS  QUALITY



Download on the
 **App Store**



ANDROID APP ON
 **Google play**



Subsidiaries

URMA GmbH
Eisenbahnstraße 37
DE-77815 Bühl
+49 7223 911 170
info@urma-gmbh.de

URMA Trading (Shanghai) Co. Ltd.
Room 511, Hua Nan Mansion
1988 Dongfang Road
Pudong New District
CN-200125 Shanghai
+86 (21) 6109 6216
info@urmachina.com

Iraupen URMA
Polígono Belartza
ES-20018 Donostia-San Sebastian
Spain
+34 943 667 036
info@iraupen.es

License Manufacturer

Command Tooling Systems, LLC
13931 Sunfish Lake Blvd.
Ramsey MN, 55303 USA
+1 800 328 2197
support@commandtool.com

Paul Horn GmbH
Unter dem Holz 33-35
DE-72072 Tübingen
+49 (0) 7071 7004 0
info@phorn.de

Sumitomo Electric Ind., Ltd.
1-1-1, Koyakita,
Itami-shi, Hyogo 664-0016
Japan
+81 72 772 4535
info@sumitomotool.com